

T E C H N I C A L   M A N U A L

DIRECT SUPPORT AND GENERAL SUPPORT  
MAINTENANCE

REPAIR PARTS AND SPECIAL TOOLS LISTS  
(INCLUDING DEPOT MAINTENANCE REPAIR  
PARTS AND SPECIAL TOOLS)

F O R

BATTERY CHARGER PP-7286/U

(NSN 6130-01-041-3490)

TECHNICAL MANUAL }  
 NO. 11-6130-392-34P }

HEADQUARTERS  
 DEPARTMENT OF THE ARMY  
 WASHINGTON, DC 8 November 1979

DIRECT SUPPORT AND GENERAL  
 REPAIR PARTS AND SPECIAL TOOLS LISTS  
 (INCLUDING DEPOT MAINTENANCE REPAIR  
 PARTS AND SPECIAL TOOLS)  
 FOR  
 BATTERY CHARGER PP-7286/U  
 (NSN 6130-01-041-3490)

*Current as of 16 May 1979*

**REPORTING ERRORS AND RECOMMENDED IMPROVEMENTS**

You can help improve this manual. If you find any mistakes or if you know of a way to improve the procedures, please let us know. Mail your letter, DA Form 2028 (Recommended Changes to Publications and Blank Forms), or DA Form 2028-2 located in back of this manual direct to Commander, US Army Communications and Electronics Materiel Readiness Command, ATTN: DR-SEL-ME-MQ, Fort Monmouth, NJ 07703.

In either case, a reply will be furnished direct to you.

**Table of Contents**

		Page	Illus Figure
SECTION	I. Introduction . . . . .	1	
	II. Repair Parts List . . . . .	5	
Group	00 Battery Charger PP-7286/U . . . . .	5	1
	01 Battery Charger Assembly . . . . .	11	2
	0101 Charging Module PC Board (A6-A10) . . . . .	19	3
	0102 Power Supply PC Board (AU) . . . . .	23	4
	0103 Timing Circuit PC Board (A12) . . . . .	25	5
	0104 Display Circuit PC Board (A13) . . . . .	27	6
SECTION	II. Special Tools List . . . . .	29	7
	IV. National Stock Number and Part Number Index . . . . .	30	

# SECTION I

## INTRODUCTION

### 1. Scope

This manual lists spares and repair parts; special tools; special test, measurement, and diagnostic equipment (TMDE), and other special support equipment required for performance of direct support, and general support maintenance of the PP-7286/U.

It authorizes the requisitioning and issue of spares and repair parts as indicated by the source and maintenance codes.

### 2. General

This Repair Parts and Special Tools List is divided into the following sections:

*a. Section II. Repair Parts List.* A list of spares and repair parts authorized for use in the performance of maintenance. The list also includes parts which must be removed for replacement of the authorized parts. Parts lists are composed of functional groups in numeric sequence, with the parts in each group listed in figure and item number sequence.

*b. Section III. Special Tools List.* A list of special tools, special TMDE, and other special support equipment authorized for the performance of maintenance.

*c. Section IV. National Stock Number and Part Number Index.* A list, in National item identification number (NIIN) sequence, of all National stock numbers (NSN) appearing in the listings, followed by a list, in alphameric sequence, of all part numbers appearing in the listings. National stock numbers and part numbers are cross-referenced to each illustration figure and item number appearance.

### 3. Explanation of Columns

*a. Illustration.* This column is divided as follows:

(1) *Figure number.* Indicates the figure number of the illustration on which the item is shown.

(2) *Item number.* The number used to identify item called out in the illustration.

*b. Source, Maintenance, and Recoverability (SMR) Codes.*

(1) *Source code.* Source codes indicate the manner of acquiring support items for maintenance, repair, or overhaul of end items. Source codes are entered in the first and second positions of the Uniform SMR Code format as follows:

*code*

*Definition*

PA - Item procured and stocked for anticipated or known usage.

PB - Item procured and stocked for insurance purpose because essentiality dictates that a minimum quantity be available in the supply system.

PE - Support equipment procured and stocked for initial issue or outfitting to specified maintenance repair activities.

XD - A support item that is not stocked. When required, item will be procured through normal supply channels.

#### NOTE

Cannibalization or salvage may be used as a source of supply for any items source coded above except those coded XA and aircraft support items as restricted by AR 700-42.

(2) *Maintenance code.* Maintenance codes are assigned to indicate the levels of maintenance authorized to USE and REPAIR support items. The maintenance codes are entered in the third and fourth positions of the Uniform SMR Code format as follows:

(a) The maintenance code entered in the third position will indicate the lowest maintenance level authorized to remove, replace, and use the support item. The maintenance code entered in the third position will indicate one of the following levels of maintenance:

*Code*

*Application/Explanation*

C - Crew or operator maintenance performed within organizational maintenance.

O - Support item is removed, replaced, used at the organizational level.

F - Support item is removed, replaced, used at the direct support level.

H - Support item is removed, replaced, used at the general support level.

D - Support items that are removed, replaced, used at depot, mobile depot, specialized repair activity only.

(b) The maintenance code entered in the fourth position indicates whether the item is to be repaired and identifies the lowest maintenance level with the capability to perform complete repair (i.e., all authorized maintenance functions). This position will contain one of the following maintenance codes:

- | <i>code</i> | <i>Application/Explanation</i>  |
|-------------|---|
| F -         | The lowest maintenance level capable of complete repair of the support item is the direct support level.  |
| H -         | The lowest maintenance level capable of complete repair of the support item is the general support level. |
| D -         | The lowest maintenance level capable of complete repair of the support item is the depot level.           |
| Z -         | Nonreparable. No repair is authorized.  |

(3) *Recoverability code*. Recoverability codes are assigned to support items to indicate the disposition action on unserviceable items. The recoverability code is entered in the fifth position of the Uniform SMR Code format as follows:

- | <i>Recoverability Codes</i> | <i>Definition</i>   |
|-----------------------------|---|
| Z -                         | Nonreparable item. When unserviceable, condemn and dispose at the level indicated in position 3.  |
| F -                         | Reparable item. When uneconomically repairable, condemn and dispose at the direct support level.  |
| H -                         | Reparable item. When uneconomically repairable, condemn and dispose at the general support level.                                       |
| D -                         | Reparable item. When beyond lower level repair capability, return to depot. Condemnation and disposal not authorized below depot level. |

*c. National Stock Number*. Indicates the National stock number assigned to the item and will be used for requisitioning purposes.

*d. Part Number*. Indicates the primary number used by the manufacturer (individual, company, firm, corporation, or Government activity), which controls the design and characteristics of the item by means of its engineering drawings, specifications, standards, and inspection requirements to identify an item or range of items.

**NOTE**

When a stock numbered item is requisitioned, the repair part received may have a different part number than the part being replaced.

*e. Federal Supply Code for Manufacturer (FSCM)*. The FSCM is a 5-digit numeric code listed in SB 708-42 which is used to identify the manufacturer, distributor, or Government agency, etc.

*f. Description*. Indicates the Federal item name and, if required, a minimum description to identify the item. In the Special Tools List, the initial basis of issue (1301) appears as the last line in the entry for each special tool, special TMDE, and other special support equipment. When density of equipments

supported exceeds density spread indicated in the basis of issue, the total authorization is increased accordingly.

*g. Unit of Measure (U/M)*. Indicates the standard of the basic quantity of the listed item as used in performing the actual maintenance function. This measure is expressed by a two-character alphabetical abbreviation (e.g., ea. in. pr. etc). When the unit of measure differs from the unit of issue, the lowest unit of issue that will satisfy the required units of measure will be requisitioned.

*h. Quantity Incorporated in Unit*. Indicates the quantity of the item used in the breakout shown on the illustration figure, which is prepared for a functional group, subfunctional group, or an assembly.

**4. Special Information**

*a.* The following publications pertain to the PP-7286/U and its components:

TM 11-6130-392-12, Operator's and Organizational Maintenance Manual: Battery Charger PP-7286/U (to be published).

TM 11-6130-392-20P, organizational Maintenance Repair Parts and Special Tools Lists for Battery Charger PP-7286/U.

TM 11-6130-392-34, Direct Support and General Support Maintenance Manual for Battery Charger PP- 7286/U (to be published).

*b.* National stock number (NSN's) that are missing from P source coded items have been applied for and will be added to this TM by future change/revision when they are entered in the Army Master Data File (AMDF). Until the NSN'S are established and published, submit exception requestions to Commander, US Army Communications and Electronics Materiel Readiness Command, ATTN: DRSEL-MM, Fort Monmouth, NJ 07703 for the part required to support your equipment.

**5. How to Locate Repair Parts**

*a.* When National stock number or part number is unknown.

(1) *First*. Using the table of contents, determine the functional group within which the item belongs. This is necessary since illustrations are prepared for functional groups and listings are divided into the same groups.

(2) *Second*. Find the illustration covering the functional group to which the item belongs.

(3) *Third*. Identify the item on the illustration and note the illustration figure and item number of the item.

(4) *Fourth*. Using the Repair Parts Listing, find the figure and item number noted on the illustration.

*b.* When National stock stock number or part number is known.

(1) *First.* Using the Index of National Stock Numbers and Part. Numbers, find the pertinent. National stock number or part number. This index is in NIIN sequence followed by a list of part numbers in alphameric sequence, cross-referenced to the

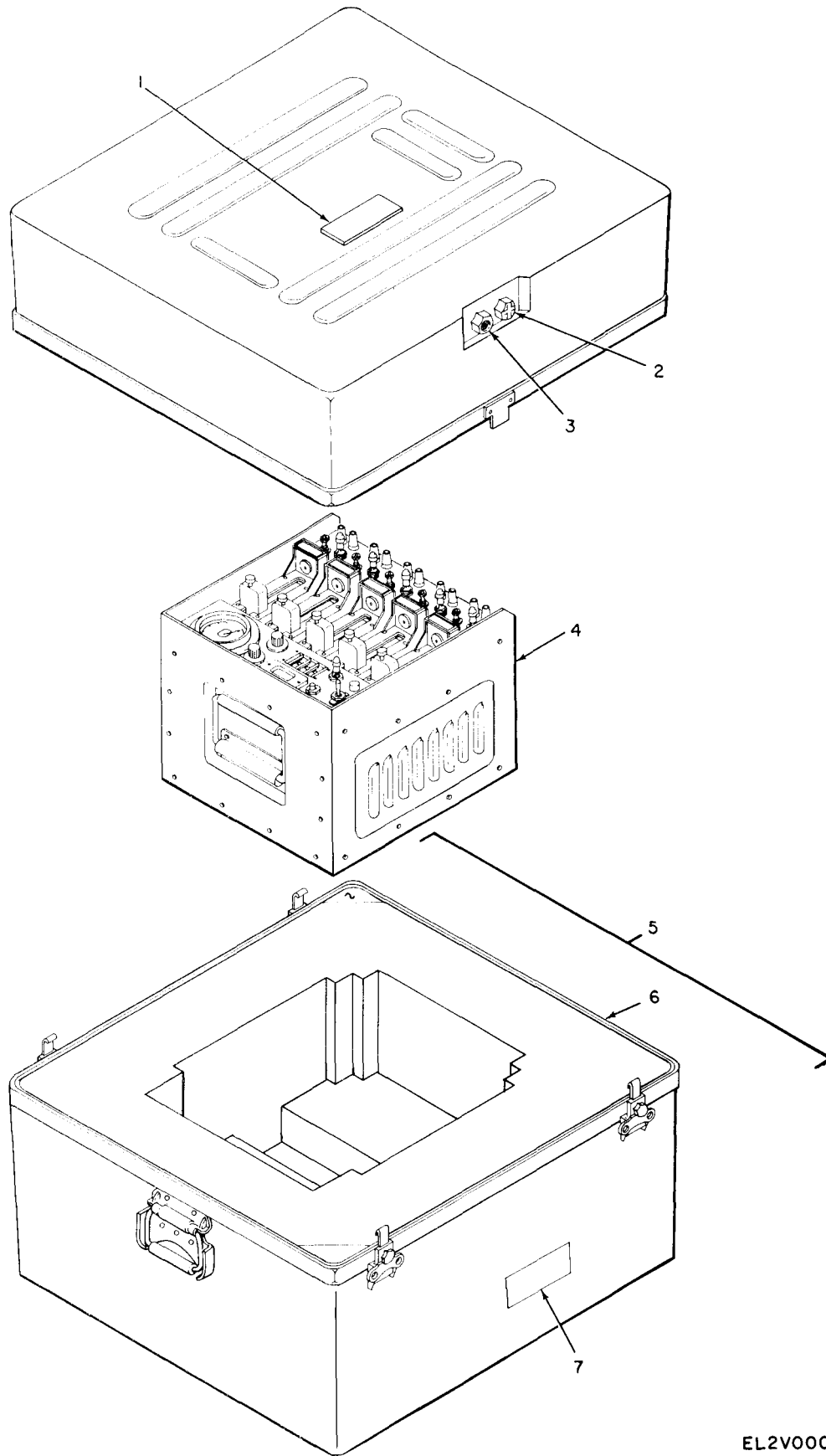
illustration figure number and item number.

(2) *Second.* After finding the figure and item number, locate the figure and item number in the repair parts list.

## **6. Abbreviations**

Not applicable.

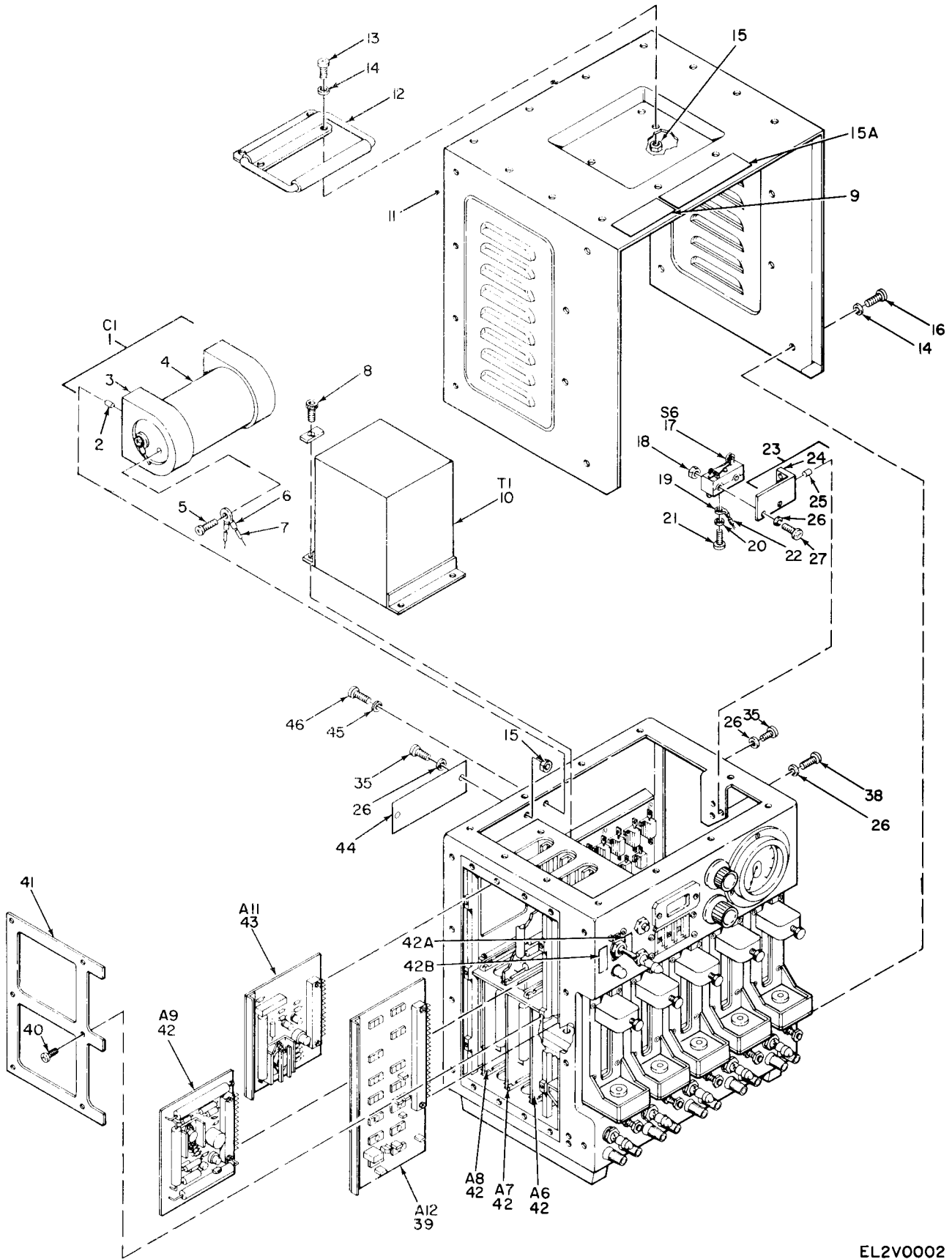
**(Next printed page is 4)**



EL2V0001

Figure 1. Battery Charger PP-7286/U.

SECTION II		TM11-6130-392-34P					
(1)	(2)	(3)	(4)	(5)	(6)	(7)	(8)
ILLUSTRATION							
(A)	(B)	NATIONAL	PART		DESCRIPTION	USABLE ON CODE	QTY
FIG	ITEM	STOCK	NUMBER	FSCM			INC
NO	NO	NUMBER	NUMBER				IN
							UNIT
					GROUP 00 BATTERY CHARGER PP-7286/U		
1	1	XDHZZ		SMC937818	80063		EA 1
1	2	PAFZZ	6685-00-989-5312	MS18013-1	96906		EA 1
1	3	PAFZZ		TA333-50-50-R	15505		EA 1
1	4	XDDDD		SME889030	80063		EA 1
1	5	XDHZZ		SMD889092	80063		EA 1
1	6	XDHZZ		SME889093	80063		EA 1
1	7	XDHZZ		SMC889108	80063		EA 1



EL2V0002

Figure 2. Battery Charger Assembly (Sheet 1 of 5).



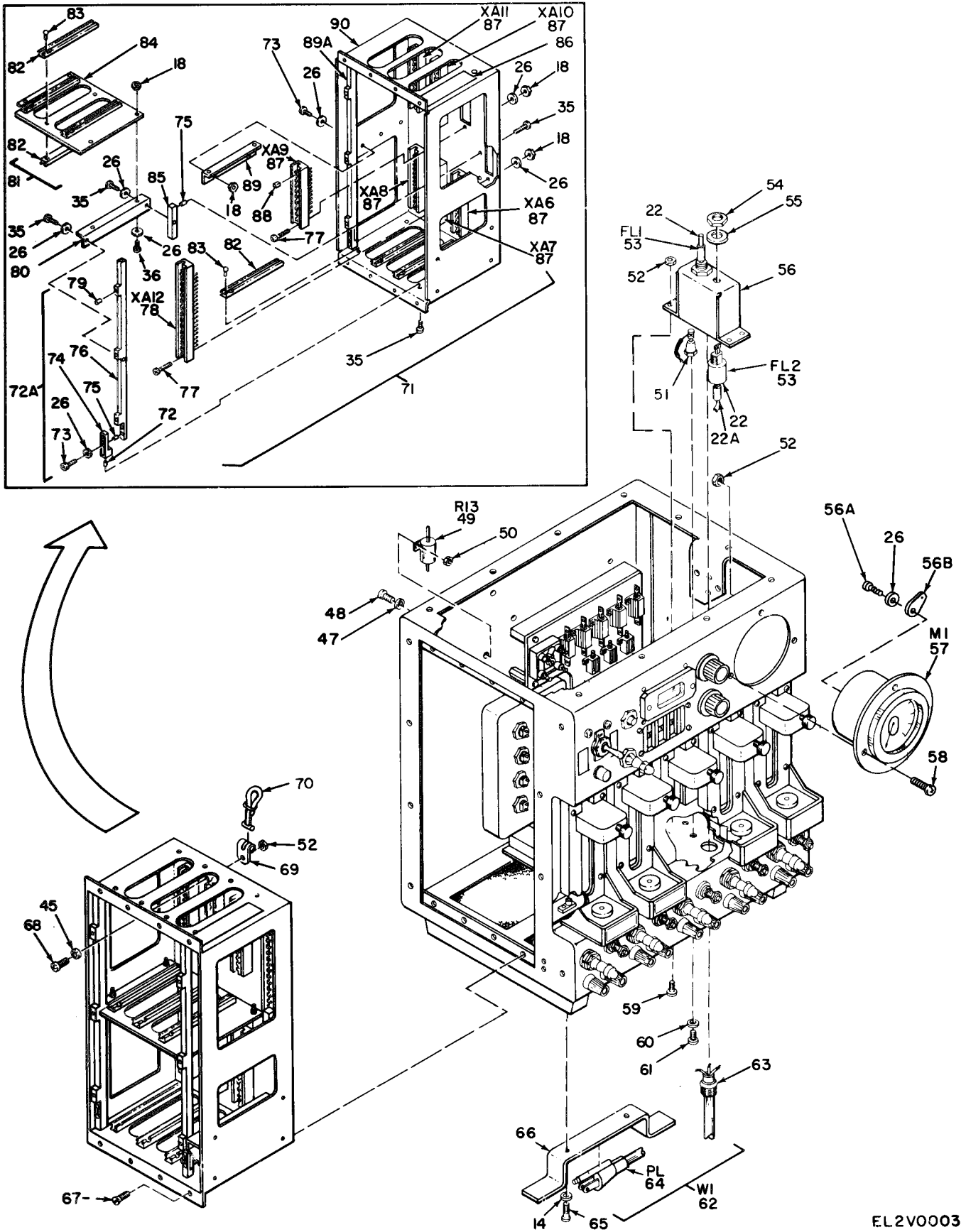


Figure 2. Battery Charger Assembly (Sheet 2 of 5).

EL2V0003

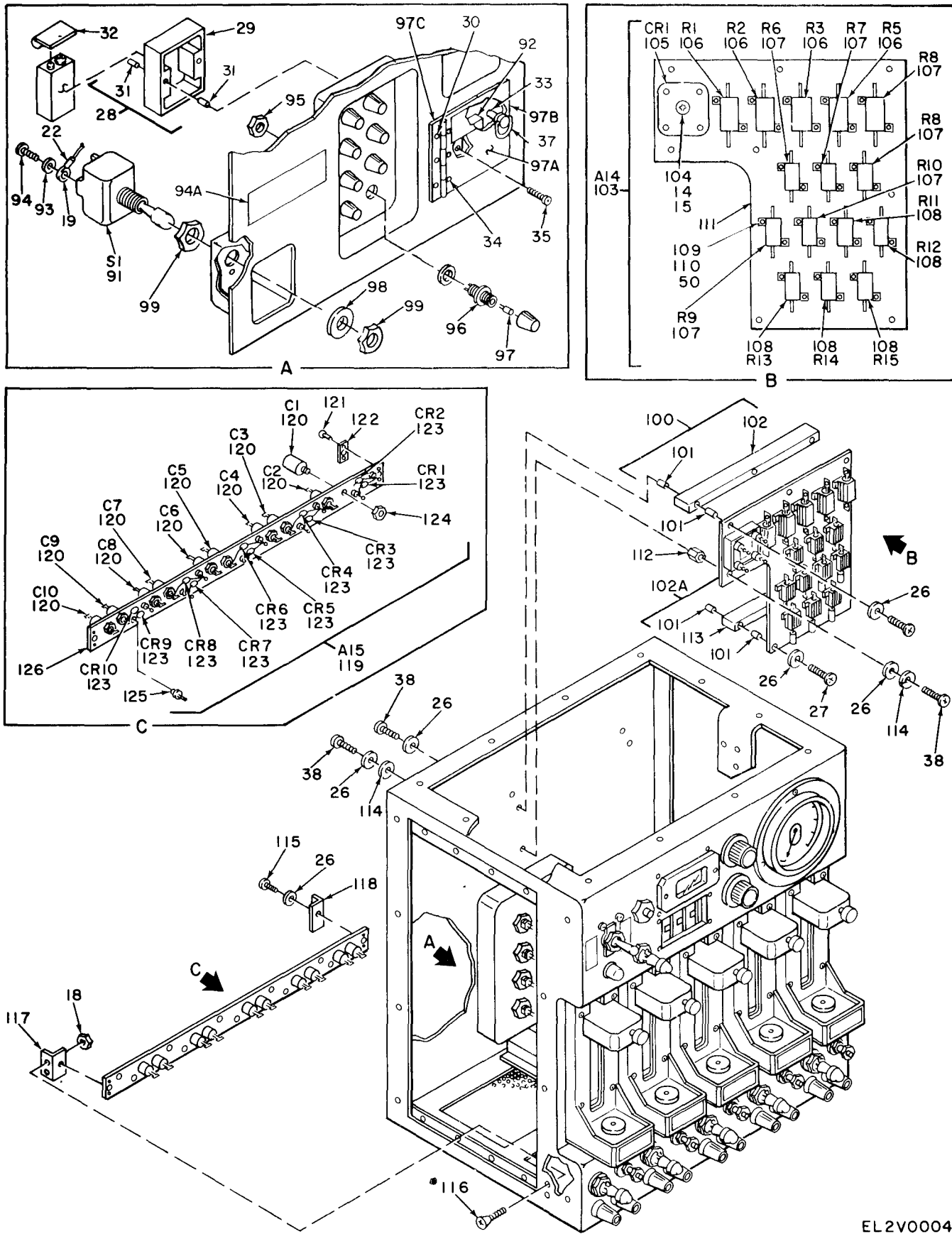


Figure 2. Battery Charger Assembly (Sheet 3 of 5).

EL2V0004

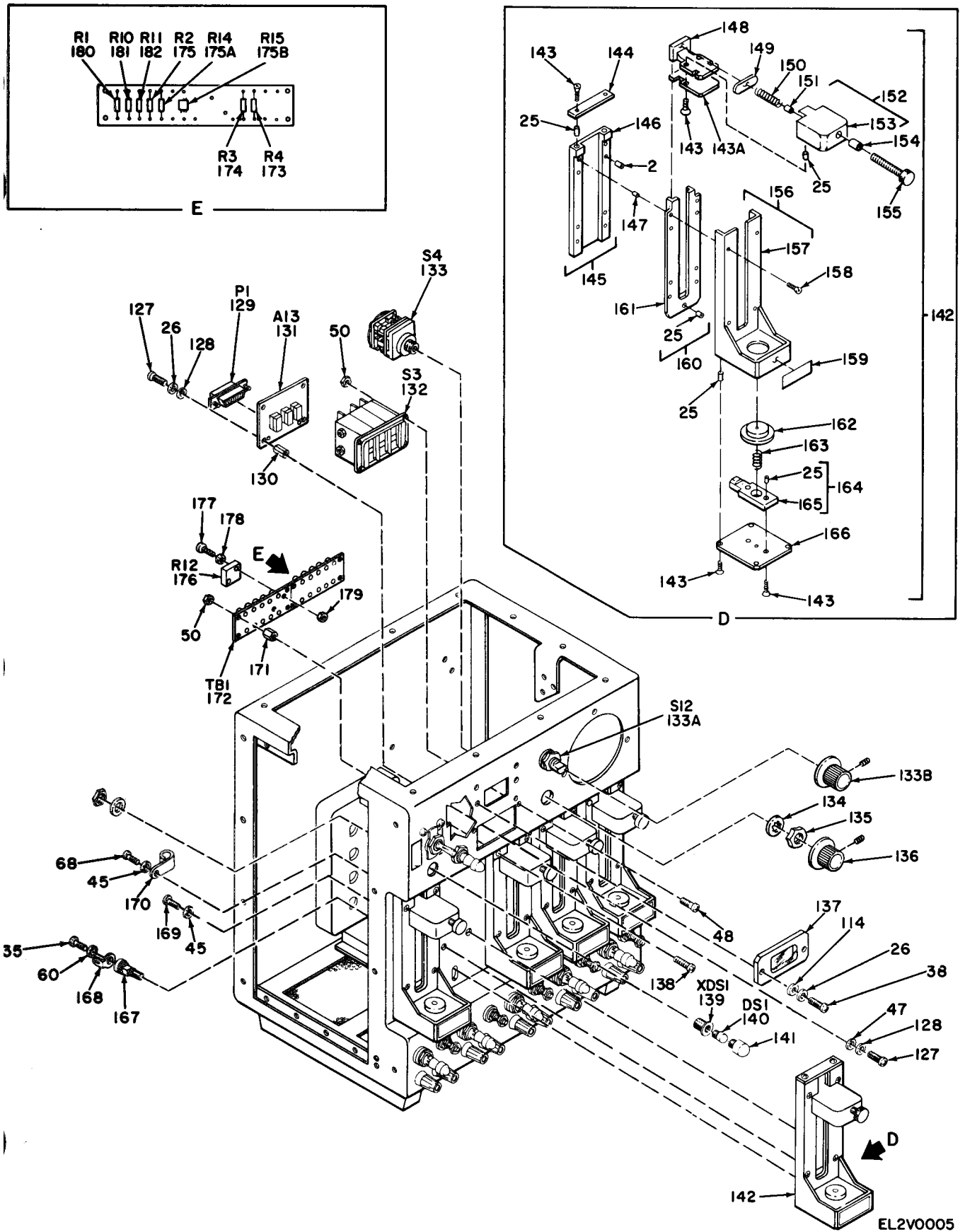


Figure 2. Battery Charger Assembly (Sheet 4 of 5).



SECTION II (1) ILLUSTRATION (A) (B) FIG ITEM NO NO		(2) SMR CODE	(3) NATIONAL STOCK NUMBER	(4) PART NUMBER	(5) FSCM	TM11-6130-392-34P (6) DESCRIPTION	(7) USABLE ON CODE U/M	(8) QTY INC IN UNIT
GROUP 01 BATTERY CHARGER ASSEMBLY								
2	1	PAHHH	5910-01-072-0501	SM-C-889094	80063	CAPACITOR ASSY	EA	1
2	2	XDPZZ	5340-00-815-4930	MS21209C0615	96906	INSERT, SCREW, THREAD	EA	6
2	3	XDHZZ		SMC889074	80063	MT, CAPACITOR	EA	2
2	4	XDHZZ		M39018-04-1203	81349	CAPACITOR	EA	1
2	5	XDHZZ	5305-00-460-0673	NAS1635-3-7	80205	SCREW, MACHINE	EA	2
2	6	XDHZZ	5940-00-143-4771	MS25036-103	96906	TERMINAL, LUG	EA	6
2	7	PAHZZ	7690-01-072-0426	SM-C-889113-2	80063	BAND MARKING	EA	2
2	8	XDHZZ	5305-00-225-7773	MS16996-22	96906	SCREW, CAP, SOCKET HE	EA	4
2	9	XDDZZ		SMC937844	80063	LABEL, WARNING	EA	1
2	10	PAHZZ		SMC889036	80063	TRANSFORMER	EA	1
2	11	XDDZZ		SME889059	80063	COVER, BC	EA	1
2	12	XDHZZ		SMC889133	80063	HANDLE	EA	1
2	13	XDHZZ	5305-01-015-0994	NAS1635-08-6	80205	SCREW, MACHINE	EA	4
2	14	XDHZZ	5310-00-880-5978	MS15795-807	96906	WASHER, FLAT	EA	53
2	15	XDHZZ	5310-00-845-5030	NAS1291C08M	80205	NUT, SLEF-LOCKING, EX	EA	5
2	15A	XDDZZ		SMC937817	80063	LABEL, WARNING	EA	1
2	16	XDHZZ	5305-01-020-0178	NAS1635-08-7	80205	SCREW, MACHINE	EA	28
2	17	PAHZZ		SMC889119	80063	SWITCH, INT	EA	1
2	18	XDHZZ	5310-00-845-2359	NAS1291C04M	80205	NUT, SELF-LOCKING, EX	EA	32
2	19	PAHZZ	5940-00-813-0698	MS25036-101	96906	TERMINAL, LUG	EA	12
2	20	XDHZZ	5310-00-058-3599	MS35335-57	96906	WASHER, LOCK	EA	6
2	21	XDHZZ	5305-00-054-5644	MS51957-11	96906	SCREW, MACHINE	EA	6
2	22	PAHZZ	7690-01-072-0425	SM-C-889113-1	80063	BAND, MARKING	EA	23
2	22A	PAHZZ	7690-01-072-0427	SM-C-955578	80063	BAND, MARKING	EA	2
2	23	XDHHH		SMC889121	80063	MOUNT, BAT	EA	1
2	24	XDHZZ		SMC889121-1	80063	MOUNT	EA	1
2	25	XDPZZ	5340-00-631-7894	MS21209C0415	96906	INSERT, SCREW THREAD	EA	16
2	26	XDHZZ	5310-00-595-6211	MS15795-803	96906	WASHER, FLAT	EA	63
2	27	XDHZZ	5305-00-054-5655	MS51957-21	96906	SCREW, MACHINE	EA	2
2	28	XDHHH		SMC889079	80063	HOLDER, BATTERY ASSY	EA	1
2	29	XDHZZ		SMC889079-1	80063	HOLDER, BATTERY	EA	1
2	30	XDDZZ		MS16535-24	96906	RIVET	EA	3
2	31	XDHZZ	5340-00-842-5920	MS122116	96906	INSERT, SCREW THREAD	EA	2
2	32	PAHZZ		SM-C-889102	80063	CLIP, BATTERY	EA	1
2	33	XDDZZ		SMC955581	80063	STUD	EA	1
2	34	XDDZZ	5320-00-821-4996	MS16535-23	96906	RIVET, TUBULAR	EA	3
2	35	XDHZZ	5305-00-054-5647	MS51957-13	96906	SCREW, MACHINE	EA	19
2	36	XDHZZ	5305-00-054-5650	MS51957-16	96906	SCREW, MACHINE	EA	7

SECTION II (1) ILLUSTRATION		(2)	(3)	(4)	(5)	TM11-6130-392-34P (6)	(7)	(8)
(A) FIG NO	(B) ITEM NO	SMR CODE	NATIONAL STOCK NUMBER	PART NUMBER	FSCM	DESCRIPTION	USABLE ON CODE	U/M INC IN UNIT
2	37	XDDZZ		SMC955582	80063	SNAP RING	EA	1
2	38	XDHZZ	5305-00-054-5648	MS51957-14	96906	SCREW,MACHINE	EA	16
2	39	PAFDD	6130-01-072-0414	SM-D-889040	80063	TIMING CKT ASSY	EA	1
2	40	XDHZZ	5305-00-814-1707	NAS662C2R4	80205	SCREW,MACHINE	EA	6
2	41	PAHZZ	6130-01-072-0424	SM-C-889032	80063	PWB,RETAINER	EA	1
2	42	PAFDD	6130-01-072-0413	SM-D-889037	80063	CKT,CHARG ASSY	EA	5
2	42A	XDDZZ		SMC937843	80063	LABEL WARNING	EA	1
2	42B	XDDZZ		SMC937842	80063	LABEL WARNING	EA	1
2	43	PAFDD	6130-01-072-0484	SM-D-889043	80063	PWR SUPPLY ASSY	EA	1
2	44	XDHZZ		SMC889110	80063	PLATE, IDENT	EA	1
2	45	XDHZZ	5310-00-722-5998	MS15795-805	96906	WASHER,FLAT	EA	29
2	46	XDHZZ	5305-00-054-6651	MS51957-27	96906	SCREW,MACHINE	EA	4
2	47	XDHZZ	5310-00-595-6761	MS15795-802	96906	WASHER,FLAT	EA	8
2	48	XDHZZ	5305-00-054-5639	MS51957-5	96906	SCREW,MACHINE	EA	4
2	49	PAHZZ	5905-00-325-9264	RER65F1001M	81349	RESISTOR, FIXED,WIRE	EA	1
2	50	XDHZZ	5310-00-813-6950	NAS1291C02M	80205	NUT,SELF-LOCKING,EX	EA	42
2	51	PAHZZ	5940-00-687-0294	SM-C-889100	80063	TERMINAL,GND	EA	1
2	52	XDHZZ	5310-00-878-9518	NAS1291C06M	80205	NUT,SLEF-LOCKING,EX	EA	9
2	53	PAHZZ		SM-C-889064	80063	FILTER,EMI	EA	2
2	54	XDHZZ		MS25082C5	96906	NUT,PLAIN,HEXAGON	EA	14
2	55	XDHZZ	5310-00-974-6623	MS35338-140	96906	WASHER,LOCK	EA	2
2	56	XDDZZ		SMC889081	80063	BKT,EMI FILTER	EA	1
2	56A	XDHZZ	5305-00-054-5646	MS51957-12	96906	SCREW,MACHINE	EA	12
2	56B	PAHZZ	5940-00-155-7686	MS77066-1	96906	TERMINAL,LUG	EA	2
2	57	PAHZZ	6625-01-075-9209	SM-C-889062	80063	METER	EA	1
2	58	XDHZZ	5305-00-054-6655	MS51957-31	96906	SCREW,MACHINE	EA	3
2	59	XDHZZ	5305-00-958-2918	MS24693C26	96906	SCREW,MACHINE	EA	4
2	60	XDHZZ	5310-00-550-3715	MS35333-70	96906	WASHER,LOCK	EA	10
2	61	XDHZZ	5305-00-993-9189	MS24693C2	96906	SCREW,MACHINE	EA	3
2	62	XDFFF		SMC889106	80063	CABLE,POWER	EA	1
2	63	PAFZZ		SM-C-889103	80063	STRAIN RELEIEF	EA	1
2	64	PAFZZ		M3767-13	81349	PLUG	EA	1
2	65	XDHZZ	5305-00-901-5077	NAS1635-08-8	80205	SCREW,MACHINE	EA	2
2	66	XDHZZ		SMC889075	80063	BKT,PWR CABLE	EA	1
2	67	XDHZZ	5305-00-056-9961	MS24693C4	96906	SCREW,MACHINE	EA	8
2	68	XDHZZ	5305-00-054-6654	MS51957-30	96906	SCREW,MACHINE	EA	6
2	69	XDHZZ		M24066-3-004	81349	CLIP	EA	1
2	70	XDHZZ	5975-00-727-5153	MS3367-4-9	96906	STRAP,TIEDOWN,ELECT	EA	1
2	71	XDDDD		SMD889049	80063	PWB BASKET ASSY	EA	1
2	72	XDDZZ	5340-00-631-7894	MS21209C0415	96906	INSERT,SCREW THREAD	EA	1

SECTION II (1) ILLUSTRATION (A) FIG NO		(2) ITEM NO	(3) SMR CODE	(4) NATIONAL STOCK NUMBER	(5) PART NUMBER	(6) FSCM	TM11-6130-392-34P (6) DESCRIPTION	(7) USABLE ON CODE	(8) QTY INC IN UNIT
2	72A	XDDZZ			SMC889135	80063	TOP RAIL ASSY	EA	1
2	73	XDHZZ		5305-00-054-5648	MS51957-14	96906	SCREW,MACHINE	EA	7
2	74	XDDZZ			SMC889073-1	80063	RAIL EXT, TOP	EA	1
2	75	XDDZZ		5340-00-631-7894	MS21209C0415	96906	INSERT,SCREW THREAD	EA	11
2	76	XDDZZ			SMC889135-1	80063	TOP RAIL	EA	1
2	77	XDHZZ		5305-00-054-5652	MS51957-18	96906	SCREW,MACHINE	EA	14
2	78	PADZZ		5935-00-926-7522	UG274CU	80058	CONNOCOTR,RECEPTACL	EA	1
2	79	XDDZZ			SMC882448	80063	INSERT	EA	6
2	80	XDDZZ			SMC889056	80063	MOUNT,RIGHT	EA	1
2	81	XDDDD			SMD889051	80063	SUPPORT,ASSY	EA	1
2	82	XDDZZ			SMC889052	80063	GUIDE,PWB	EA	8
2	83	XDDZZ			MS20470AD2-3	96906	RIVET,SOLID	EA	26
2	84	XDDZZ			SMD889051-1	80063	SUPPORT	EA	1
2	85	XDDZZ			SMC889053-1	80063	RAIL,BOTTOM	EA	1
2	86	XDDZZ			SMC937816	80063	LABEL,WARNING	EA	1
2	87	PADZZ		5935-00-109-0137	M21097-4-09	81349	CONNECTOR,RECEPTACL	EA	6
2	88	XDHZZ		5935-00-089-7918	M21097-11-03	81349	KEY POLARIZING,CONN	EA	6
2	89	XDDZZ			SMC889055	80063	MOUNT,LEFT	EA	1
2	89A	XDDZZ			SMC889054-1	80063	RAIL, TOP	EA	1
2	90	XDDZZ			SME889050	80063	CHASSIS ASSY	EA	1
2	91	PAHZZ		5930-00-852-2407	MS24659-23D	96906	SWITCH,TOGGLE	EA	1
2	92	XDDZZ			SMD955580-2	80063	PAD, FRICTION	EA	1
2	93	XDHZZ		5310-00-929-6395	MS35338-136	96906	WASHER,LOCK	EA	8
2	94	XDHZZ		5305-00-054-6650	MS51957-26	96906	SCREW,MACHINE	EA	8
2	94A	XDDZZ			SMC937844	80063	LABEL WARNING	EA	1
2	95	XDHZZ		5310-00-003-9264	MS25082C6	96906	NUT,PLAIN,HEXAGON	EA	8
2	96	PAHZZ		5920-00-785-5471	FHN42W	81349	FUSEHOLDER,EXTRACTO	EA	8
2	97	PACZZ		5920-00-901-9938	FM01-125V1A	81349	FUSE,CARTRDIGE	EA	8
2	97A	XDHZZ		5310-00-820-1559	NAS1068C08M	80205	NUT PLATE	EA	38
2	97B	XDDZZ			SMD955580-1	80063	DOOR	EA	1
2	97C	XDDZZ			MS20257C1-250	96906	HINGE	EA	1
2	97D	XDDZZ			SMC955585	80063	LABEL,WARNING	EA	1
2	98	PAHZZ		5310-00-999-4033	MS25081C4	96906	WASHER,KEY	EA	7
2	99	PAHZZ		5310-00-137-3068	MS25082C21	96906	NUT,PLAIN,HEXAGON	EA	12
2	100	XDHHH			SMC889084	80063	MT, TOP RESISTOR	EA	1
2	101	XDHZZ		5340-00-631-7894	MS21209C0415	96906	INSERT,SCREW THREAD	EA	10
2	102	XDHZZ			SMC889084-1	80063	RAIL, TOP	EA	1
2	102A	XDHZZ			SMC889085	80063	MT,BOT RESISTOR	EA	1
2	103	XDHHH			SMC889101	80063	RESISTOR ASSY	EA	1
2	104	XDHZZ		5305-00-114-9734	NAS1635-08-12	80205	SCREW,MACHINE	EA	1

SECTION II (1) ILLUSTRATION (A) FIG NO		(2) ITEM NO	(3) NATIONAL STOCK NUMBER	(4) PART NUMBER	(5) FSCM	TM11-6130-392-34P (6) DESCRIPTION	(7) USABLE ON CODE U/M	(8) QTY INC IN UNIT
2	105	PAHZZ		JANSPB25	81349	BRIDGE,DIODE	EA	1
2	106	PAHZZ		RER45F10R2M	81349	RESISTOR	EA	5
2	107	PAHZZ		RER40F44R2M	81349	RESISTOR	EA	5
2	108	PAHZZ		RER40F4R02M	81349	RESISTOR	EA	5
2	109	XDHZZ	5305-00-459-1160	NAS1635-02-5	80205	SCREW,MAHCINE	EA	30
2	110	XDHZZ	5310-00-285-5631	AN960C2	88044	WASHER,FLAT	EA	30
2	111	XDHZZ		SMD889076	80063	PLATE,RESISTOR	EA	1
2	112	XDHZZ		SMC889078-2	80063	STAND OFF	EA	3
2	113	XDHZZ		SMC889085-1	80063	RAIL,BOTTOM	EA	1
2	114	XDHZZ	5310-00-933-8118	MS35338-135	96906	WASHER,LOCK	EA	8
2	115	XDHZZ	5305-00-054-5649	MS51957-15	96906	SCREW,MACHINE	EA	4
2	116	XDHZZ	5305-00-225-6400	MS24693C3	96906	SCREW,MACHINE	EA	4
2	117	XDHZZ		SMC889071-2	80063	MT,FILTER ASSY	EA	1
2	118	XDHZZ		SMC889071-1	80063	MT,FILTER ASSY	EA	1
2	119	XDHHHH		SMC889099	80063	FILTER,ASSY	EA	1
2	120	PAHZZ		SMC889067	80063	FILTER,SOLID	EA	4
2	121	XDHZZ	5320-00-117-6930	MS20426AD2-5	96906	RIVET,SOLID	EA	4
2	122	XDHZZ	5310-00-881-9981	NAS1068C04M	80205	NUT,SELF-LOCKING,PL	EA	10
2	123	PAHZZ	5961-00-421-3002	JAN1N5550	81349	SEMICONDUCTOR DEVIC	EA	10
2	124	XDHZZ		SMC889117	80063	NUT,HEX	EA	10
2	125	PAHZZ	5940-00-051-6257	SE079B01	81349	TERMINAL,STUD	EA	10
2	126	XDHZZ		SMC889080	80063	BRACKET	EA	1
2	127	XDHZZ	5305-00-054-5637	MS51957-3	96906	SCREW,MACHINE	EA	8
2	128	XDHZZ	5310-00-928-2690	MS35338-134	96906	WASHER,LOCK	EA	8
2	129	PAHZZ		SM-C-889077	80063	CONNECTOR	EA	1
2	130	XDHZZ		SMC889078-1	80063	STAND OFF	EA	4
2	131	XDHHH		SMD889046	80063	DISPLAY CKT	EA	1
2	132	PAHZZ	5930-01-075-9262	SM-C-889065	80063	SWITCH DIGITAL	EA	1
2	133	PAHZZ		M3786-13-0039	81349	SWITCH,ROTARY	EA	1
2	133A	PAHZZ	5930-00-090-7080	M3786-13-0022	81349	SWITCH,ROTARY	EA	1
2	133B	PAFZZ	5355-00-482-4498	MS91528-1F3B	96906	KNOB	EA	1
2	134	PAHZZ	5310-00-180-0277	MS35333-76	96906	WASHER,LOCK	EA	2
2	135	PAHZZ	5310-00-138-9806	MS25082-C20	96906	NUT,PLAIN,HEXAGON	EA	4
2	136	PAFZZ		MS91528-123B	96906	KNOB	EA	1
2	137	PAFZZ		SM-C-889096	80063	WINDOW ASSY	EA	1
2	138	XDHZZ		NAS662C2R10	80205	SCREW,MACHINE	EA	4
2	139	PAHZZ	6210-00-813-8265	LH73-1	81349	LIGHT,INDICATOR	EA	1
2	140	PAOZZ	6240-00-763-7744	MS25237-387	96906	LAMP,INDACDESCENT	EA	1
2	141	PAOZZ	6210-00-248-5478	LC27GT2	81349	LENS	EA	1
2	142	PBFFH	6130-01-072-0401	SM-D-889019	80063	HOLDER,BATT ASY	EA	5



SECTION II		TM11-6130-392-34P						
(1)	(2)	(3)	(4)	(5)	(6)	(7)	(8)	
ILLUSTRATION					DESCRIPTION	USABLE ON CODE	QTY INC IN UNIT	
(A)	(B)	NATIONAL	PART	FSCM		U/M		
FIG	ITEM	STOCK	NUMBER					
NO	NO	NUMBER	NUMBER					
2	143	PAHZZ	5305-01-047-6239	MS24693-2	96906	SCREW,MACHINE	EA 10	
2	143A	XDFZZ		SMC937814	80063	INSULATOR	EA 1	
2	144	XDFZZ		SMB889021	80063	RETAINER	EA 1	
2	145	PAFFF	5970-01-074-0046	SM-C-889025	80063	INSULATOR ASSY	EA 1	
2	146	XDFZZ		SMC889025-1	80063	INSULATOR	EA 1	
2	147	XDFZZ		SMB889023	80063	INSULATOR,SCREW	EA 8	
2	148	PAFZZ	5940-01-072-0402	SM-C-889029	80063	CONTACT,POS	EA 1	
2	149	PAFZZ	6130-01-072-0412	SM-B-889022	80063	PLATE,BUFFER	EA 1	
2	150	PAFZZ		SM-C-889118	80063	SPRING	EA 1	
2	151	XDFZZ		SMB889132	80063	SPCER,SPRING	EA 1	
2	152	PAFFF		SM-C-889031	80063	INSULATOR ASSY	EA 1	
2	153	XDFZZ		SMC889031-1	80063	INSULATOR	EA 1	
2	154	XDFZZ	5340-00-290-4480	MS124735	96906	INSERT,SCREW THREAD	EA 1	
2	155	PAFZZ		SM-C-889057	80063	SCREW,POSITION	EA 1	
2	156	XDFZZ		SMD889020	80063	HOUSING ASSY	EA 1	
2	157	XDFZZ		SMD889020-1	80063	HOUSING	EA 1	
2	158	XDFZZ		MS24693-3	96906	SCREW,FH	EA	
2	159	XDFZZ		SMB889109	80063	LABEL	EA 1	
2	160	XDFZZ		SMC889024	80063	SLIDE ASSY,POS	EA 1	
2	161	XDFZZ		SMC889024-1	80063	SLIDE	EA 1	
2	162	PAFZZ	5940-01-072-0411	SM-C-889027	80063	CONTACT,NEG	EA 1	
2	163	PAFZZ	5360-00-498-2815	MS24585C261	96906	SPRING,HELICAL,COMP	EA 1	
2	164	XDFZZ		SMC889026	80063	MOUNT ASSY	EA 1	
2	165	XDFZZ		SMC889026-1	80063	MOUNT	EA 1	
2	166	XDFZZ		SMC889028	80063	COVER,NEG CONT	EA 1	
2	167	PAFZZ		SM-C-889128	80063	MOUNT ASSY	EA 10	
2	168	XDFZZ		SMC889130	80063	LUG,SOLDER	EA 1	
2	169	XDFZZ	5305-00-054-6652	MS51957-28	96906	SCREW,MACHINE	EA 17	
2	170	XDFZZ	5340-00-989-9224	MS25281R6	96906	CLAMP,LOOP	EA 1	
2	171	XDHZZ		SMC889078-3	80063	STAND OFF	EA 4	
2	172	XDHZZ		SMC955569	80063	BD,TERMINAL	EA 1	
2	173	PAHZZ	5905-00-106-3666	RCR07G103JS	81349	RESISTOR,FIXED,COMP	EA 1	
2	174	PAHZZ	5905-00-105-7768	RCR07G561JS	81349	RESISTOR,FIXED,COMP	EA 1	
2	175	PAHZZ		RNC55H4752BM	81349	RESISTOR	EA 1	
2	175A	PAHZZ		RNC55K2263FM	81349	RESISTOR	EA 1	
2	175B	PAHZZ	5905-00-161-6706	RJ26FW503	81349	RESISTOR,VARIABLE,N	EA 1	
2	176	PAHZZ	5905-00-090-7078	M39015/2-006WM	81349	RESISTOR,VARIABLE,W	EA 1	
2	177	XDHZZ	5305-00-057-3800	NAS1635-00-6	80205	SCREW,MACHINE	EA 2	
2	178	XDHZZ	5310-00-914-6543	NAS1676C0	80205	WASHER,LOCK	EA 2	
2	179	XDHZZ	5310-00-939-0676	NAS671C0	80205	NUT,PLAIN,HEXAGON	EA 2	

SECTION II (1) ILLUSTRATION (A) FIG NO		(2) (B) ITEM NO	(3) SMR CODE	(4) NATIONAL STOCK NUMBER	(5) PART NUMBER	(6) FSCM	TM11-6130-392-34P DESCRIPTION	(7) USABLE ON CODE	(8) QTY INC IN UNIT
2	180	PAHZZ			RNC55H1692BM	81349	RESISTOR	EA	1
2	181	PAHZZ			RNC55H1872BM	81349	RESISTOR	EA	1
2	182	PAHZZ			RNC55H9311BM	81349	RESISTOR	EA	1
2	183	PAHZZ			SM-C-889063	80063	CIRCUIT BRKR	EA	1
2	184	PAHZZ	5930-00-400-1820		M8805-23-003	81349	SWITCH,PUSH	EA	1
2	185	PAHZZ			M8805-72-005	81349	SWITCH	EA	1
2	186	XDHZZ	5310-00-178-8631		MS35333-75	96906	WASHER,LOCK	EA	1
2	187	XDHZZ	5310-00-984-7042		MS35338-141	96906	WASHER,LOCK	EA	1
2	188	PAHZZ			RVC6TAYS103A	81349	RESISTOR,VARIABLE,N	EA	5
2	189	PAHZZ	5930-00-412-3721		MS21027A211	96906	SWITCH,TOGGLE	EA	5
2	190	PAHZZ	5940-00-044-1583		PB01FA02	81349	POST,BINDING,ELECTR	EA	5
2	191	PAHZZ	5940-00-842-6483		PB01FA01	81349	POST,BINDING,ELECTR	EA	5
2	192	XDHZZ	5310-00-582-5677		MS15795-810	96906	WASHER,FLAT	EA	5
2	193	XDHZZ	5310-00-933-8121		MS35338-139	96906	WASHER,LOCK	EA	5
2	194	XDHZZ	5310-00-139-7088		MS25082C13	96906	NUT,PLAIN,HEXAGON	EA	5
2	195	XDHZZ	5305-00-988-7606		MS16995-30	96906	SCREW,CAP, SOCKET HE	EA	8
2	196	XDHZZ			SMC889089	80063	SKID,BAT CHGR	EA	2
2	197	XDHZZ	5310-00-543-2739		MS35333-72	96906	WASHER,LOCK	EA	10
2	198	XDHZZ	5310-00-837-1381		NAS671C8	80205	NUT,PLAIN,HEXAGON	EA	10
2	199	XDDZZ			MS20605AD3W4	96906	RIVET,BLIND	EA	4
2	200	XDDZZ			MS16535-84	96906	RIVET,TUBULAR	EA	2
2	201	XDDDD			SME889060	80063	CHASSIS ASSY BC	EA	1
2	202	XDHZZ	5320-00-584-0672		MS20426AD3-6	96906	RIVET,SOLID	EA	64
2	203	XDHZZ	5310-00-771-7361		SME889060-9	80063	PLATE, BAT HOLD	EA	1
2	204	XDHZZ	5320-00-117-6930		MS20426AD2-5	96906	RIVET,SOLID	EA	16
2	205	XDDZZ	5310-00-771-7359		NAS1068C4M	80205	NUT,SELF-LOCKING,PL	EA	4
2	206	XDHZZ	5310-00-406-0699		MS3214-5	96906	NUT,PLAIN,CLINCH	EA	2
2	207	XDDZZ			SMB937815	80063	SPACER,CLIP	EA	1
2	208	XDDZZ			M24066-3-004	81349	CLIP,SPRING	EA	1

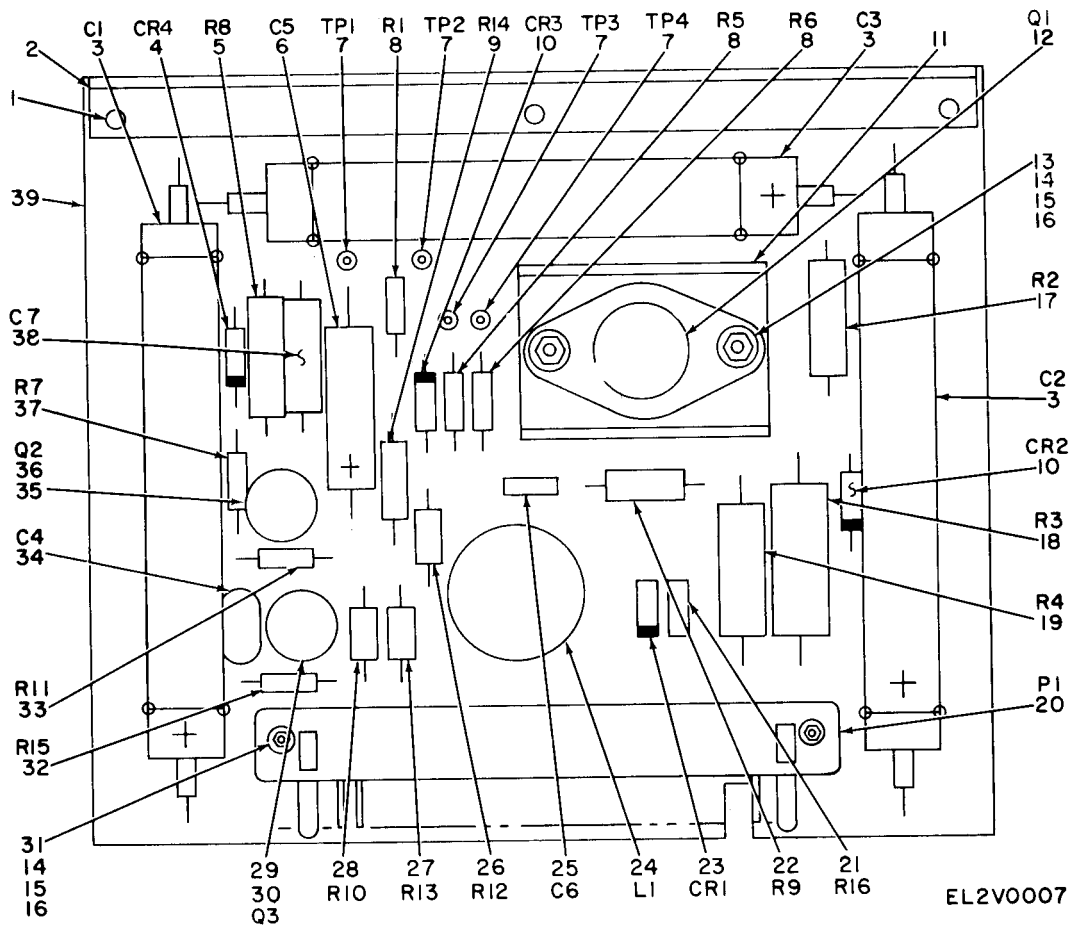


Figure 3. Charging Module PC Board (A6-A10).

SECTION II (1) ILLUSTRATION (A) (B) FIG ITEM NO NO		(2) SMR CODE	(3) NATIONAL STOCK NUMBER	(4) PART NUMBER	(5) FSCM	TM11-6130-392-34P (6) DESCRIPTION	(7) USABLE ON CODE U/M	(8) QTY INC IN UNIT
						GROUP 0101 CHARGING MODULE PC BOARD A6-A10		
3	1	XDDZZ	5320-00-821-4996	MS16535-23	96906	RIVET, TUBULAR	EA	3
3	2	XDDZZ		SMC889066	80063	STIFFENER	EA	1
3	3	PADZZ	5910-00-400-8642	M39006-01-3054	81349	CAPACITOR, FIXED, ELE	EA	3
3	4	PADZZ	5961-00-815-6895	JAN1N747A	81349	SEMICONDUCTOR DEVIC	EA	1
3	5	PADZZ		RWR8952051FM	81349	RESISTOR	EA	1
3	6	PADZZ		M39003-04-0224	81349	CAPACITOR	EA	1
3	7	PADZZ	5940-00-913-8093	M55155-29-5	81349	TERMINAL, STUD	EA	4
3	8	PADZZ	5905-00-106-3666	RCR07G103JS	81349	RESISTOR, FIXED, COMP	EA	3
3	9	PADZZ		RNC60K59R0FM	81349	RESISTOR	EA	1
3	10	PADZZ	5961-00-421-3002	JAN1N5550	81349	SEMICONDUCTOR DEVIC	EA	2
3	11	XDDZZ		SMC889086	80063	HEAT SINK	EA	1
3	12	PADZZ		SM-C-889083	80063	HYBRID, POWER	EA	1
3	13	XDDZZ	5305-00-054-5651	MS51957-17	96906	SCREW, MACHINE	EA	2
3	14	XDDZZ	5310-00-933-8118	MS35338-135	96906	WASHER, LOCK	EA	4
3	15	XDDZZ	5310-00-595-6211	MS15795-803	96906	WASHER, FLAT	EA	6
3	16	XDDZZ	5310-00-934-9748	MS35649-244	96906	NUT, PLAIN, HEXAGON	EA	4
3	17	PADZZ	5905-00-106-9346	RCR32G103JS	81349	RESISTOR, FIXED, COMP	EA	1
3	18	PADZZ		RNC70H1050BM	81349	RESISTOR	EA	1
3	19	PADZZ		RNC65H28R0BM	81349	RESISTOR	EA	1
3	20	PADZZ	5935-00-109-0147	M21097-5-03	81349	CONNECTOR, RECEPTACL	EA	1
3	21	PADZZ	5905-00-106-1356	RCR07G152JS	81349	RESISTOR, FIXED, COMP	EA	1
3	22	PADZZ	5905-00-141-1168	RCR20G222JS	81349	RESISTOR, FIXED, COMP	EA	1
3	23	PADZZ	5961-00-361-9482	JAN1N4126	81349	DIODE	EA	1
3	24	PADZZ		SMC889061	80063	INDUCTOR	EA	1
3	25	PADZZ	5910-00-513-5385	M39014-02-1218	81349	CAPACITOR, FIXED, CER	EA	1
3	26	PADZZ	5905-00-244-6934	RCR07G824JS	81349	RESISTOR, FIXED, COMP	EA	1
3	27	PADZZ		RNC55H1651BM	81349	RESISTOR	EA	1
3	28	PADZZ		RNC55H9311BM	81349	RESISTOR	EA	1
3	29	PADZZ		SM-C-739876	80063	SPACER, XSTR	EA	1
3	30	PADZZ	5961-00-104-8378	JAN2N2920	81349	SEMICONDUCTOR DEVIC	EA	1
3	31	XDDZZ	5305-00-054-5652	MS51957-18	96906	SCREW, MACHINE	EA	2
3	32	PADZZ	5905-00-458-9500	RCR05G102JS	81349	RESISTOR, FIXED, COMP	EA	1
3	33	PADZZ	5905-00-180-8303	RCR05G152JS	81349	RESISTOR, FIXED, COMP	EA	1
3	34	PADZZ		CMR04E270JPAM	81349	CAPACITOR	EA	1
3	35	PADZZ	5961-00-014-6458	JAN2N3498	81349	TRANSISTOR	EA	1
3	36	PADZZ		M38527-1-2B1	81349	TRANSIPAD	EA	1
3	37	PADZZ	5905-00-617-5091	RCR05G472JS	81349	RESISTOR, FIXED, COMP	EA	1
3	38	PADZZ	5910-00-402-1700	M39003-01-2468	81349	CAPACITOR, FIXED, ELE	EA	1

SECTION II		TM11-6130-392-34P						
(1)	(2)	(3)	(4)	(5)	(6)	(7)	(8)	
ILLUSTRATION							QTY	
(A)	(B)	NATIONAL	PART	DESCRIPTION		USABLE ON CODE	INC	
FIG	ITEM	STOCK	NUMBER	FSCM			IN	
NO	NO	CODE	NUMBER				UNIT	
3	39	XDDZZ	SMD889039	80063	PWB		EA	1

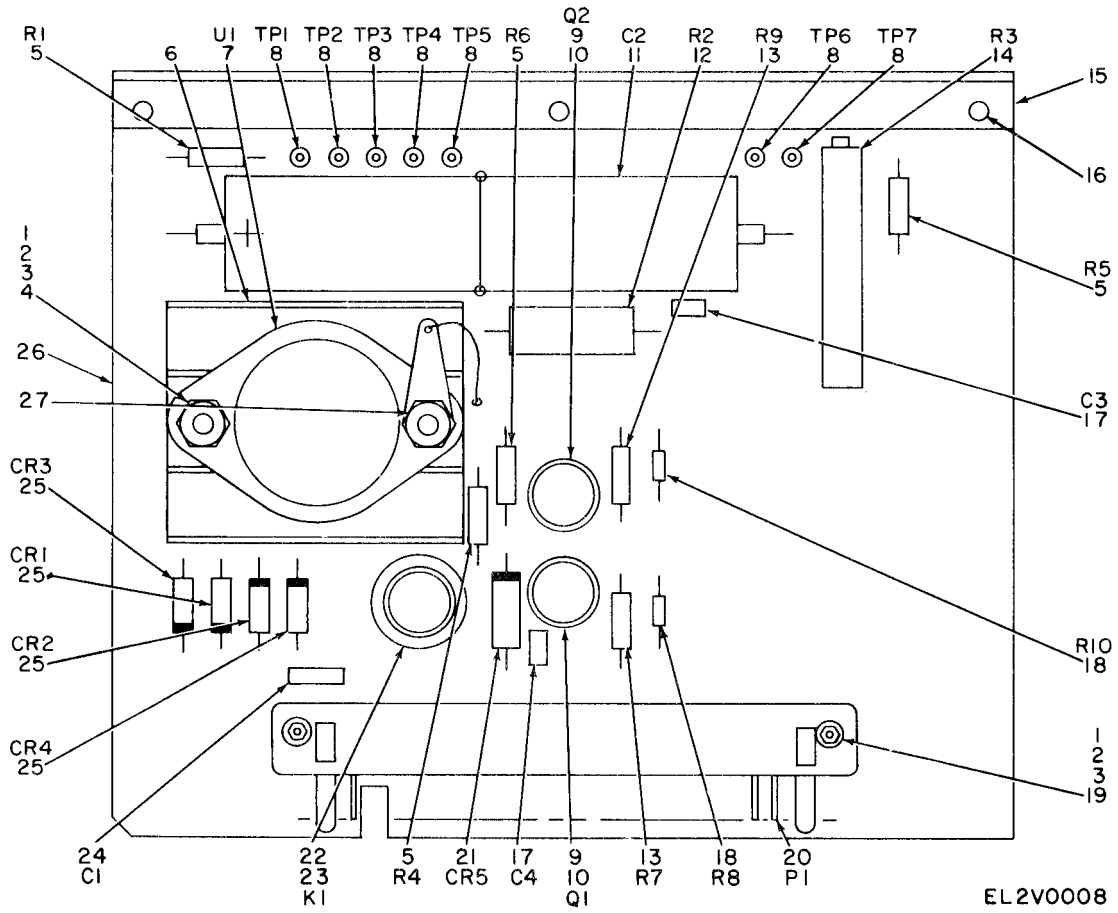
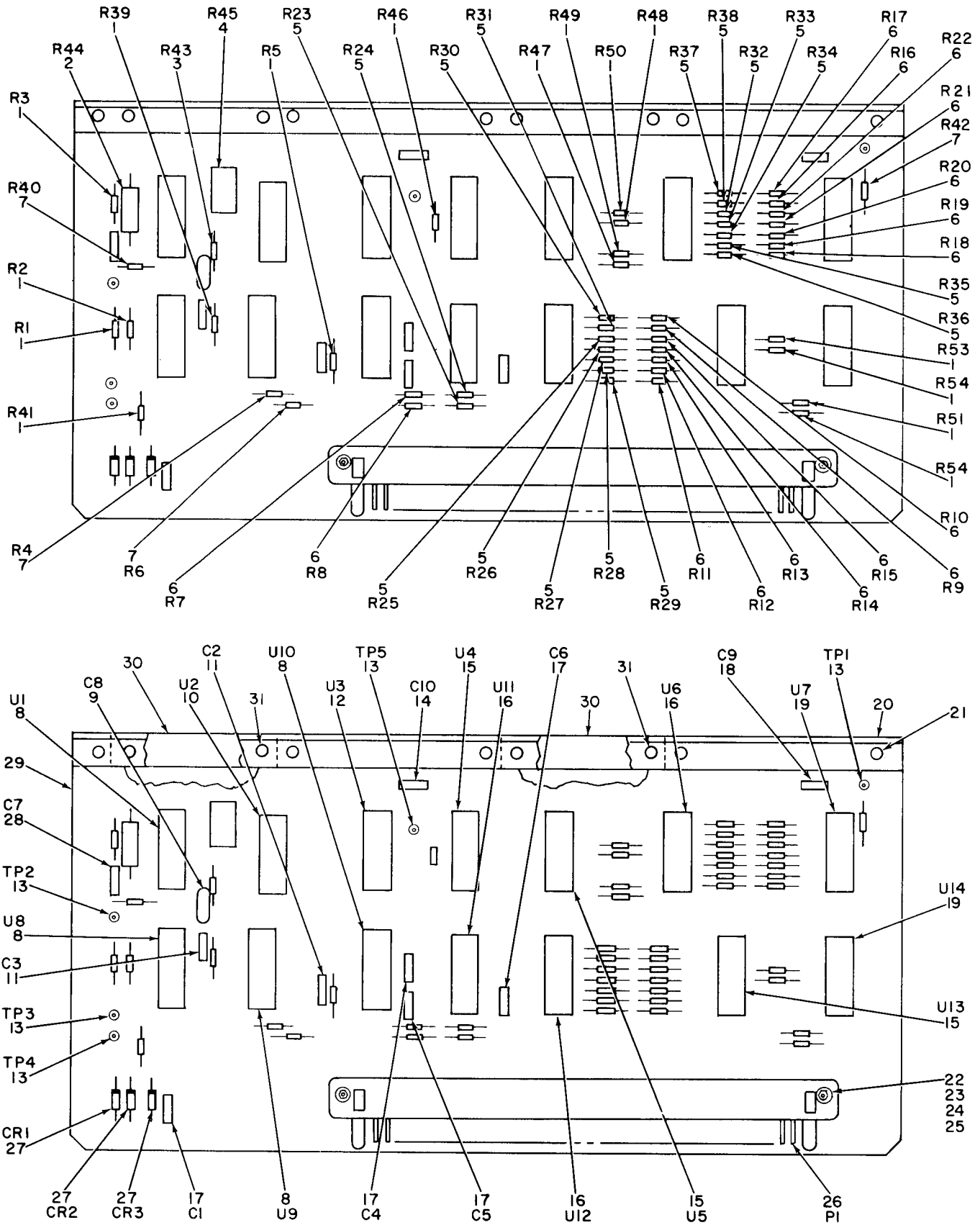


Figure 4. Power Supply PC Board (All).

SECTION II (1) ILLUSTRATION (A) (B) FIG ITEM NO NO		(2) SMR CODE	(3) NATIONAL STOCK NUMBER	(4) PART NUMBER	(5) FSCM	TM11-6130-392-34P (6) DESCRIPTION	USABLE ON CODE	(7) U/M	(8) QTY INC IN UNIT
						GROUP 0102 POWER SUPPLY PC BOARD A11			
4	1	XDDZZ	5310-00-934-9748	MS35649-244	96906	NUT,PLAIN,HEXAGON		EA	4
4	2	XDDZZ	5310-00-933-8118	MS35338-135	96906	WASHER,LOCK		EA	4
4	3	XDDZZ	5310-00-595-6211	MS15795-803	96906	WASHER,FLAT		EA	4
4	4	XDDZZ	5305-00-054-5651	MS51957-17	96906	SCREW,MACHINE		EA	2
4	5	PADZZ	5905-00-106-3666	RCR07G103JS	81349	RESISTOR,FIXED,COMP		EA	4
4	6	XDDZZ		SMC889088	80063	HEAT SINK		EA	1
4	7	PADZZ		SM-C-852390	80063	REGULATOR		EA	1
4	8	PADZZ	5940-00-913-8093	MS5155-29-5	81349	TERMINAL,STUD		EA	7
4	9	PADZZ	5961-00-951-8757	JAN2N2222A	81349	TRANSISTOR		EA	2
4	10	PADZZ		SM-C-739546	80063	TRANSIPAD		EA	2
4	11	PADZZ		M39018-01-0730	81349	CAPACITOR,FIXED,ELE		EA	1
4	12	PADZZ		RNR65K3010FM	81349	RESISTOR		EA	1
4	13	PADZZ	5905-00-110-7620	RCR07G102JS	81349	RESISTOR,FIXED,COMP		EA	2
4	14	PADZZ	5905-00-232-2993	M39015-1-003YM	81349	RESISTOR,VARIABLE,W		EA	1
4	15	XDDZZ		SMC889069	80063	STIFFENER		EA	1
4	16	XDDZZ	5320-00-821-4996	MS16535-23	96906	RIVET,TUBULAR		EA	3
4	17	PADDD		M39014-10-1473	81349	CAPACITOR		EA	2
4	18	PADZZ	5905-00-458-9346	RCR05G104JS	81349	RESISTOR,FIXED,COMP		EA	2
4	19	XDDZZ	5305-00-054-5652	MS51957-18	96906	SCREW,MACHINE		EA	2
4	20	PADZZ	5935-00-109-0147	M21097-5-03	81349	CONNECTOR,RECEPTACL		EA	1
4	21	PADZZ	5961-00-135-4182	JAN1N4960	81349	SEMICONDUCTOR DEVIC		EA	1
4	22	PADZZ		M39016-29-015L	81349	RELAY		EA	1
4	23	PADZZ		SM-C-889120	80063	SPREADER		EA	1
4	24	PADZZ	5910-00-513-5385	M39014-02-1218	81349	CAPACITOR,FIXED,CER		EA	1
4	25	PADZZ	5961-00-421-3002	JAN1N5550	81349	SEMICONDUCTOR DEVIC		EA	4
4	26	XDDZZ		SMD889045	80063	PCB,PWR SUPPLY		EA	1
4	27	PADZZ	5940-00-177-7974	MS77070-1	96906	TERMINAL,LUG		EA	1



EL2V0009

Figure 5. Timing Circuit PC Board (A12).



SECTION II (1) ILLUSTRATION (A) FIG NO		(2) SMR CODE	(3) NATIONAL STOCK NUMBER	(4) PART NUMBER	(5) FSCM	TM11-6130-392-34P (6) DESCRIPTION	(7) USABLE ON CODE U/M	(8) QTY INC IN UNIT
						GROUP 0103 TIMING CIRCUIT PC BOARD A12		
5	1	PADZZ	5905-00-458-9346	RCR05G104JS	81349	RESISTOR, FIXED, COMP	EA	15
5	2	PADZZ	5905-00-499-1983	RNC60H7501FM	81349	RESISTOR, FIXED, FILM	EA	1
5	3	PADZZ	5905-00-407-0084	RCR05G273JS	81349	RESISTOR, FIXED, COMP	EA	1
5	4	PADZZ		M39015-2-006XM	81349	RESISTOR, VAR	EA	1
5	5	PADZZ	5905-00-401-7425	RCR05G271JS	81349	RESISTOR, FIXED, COMP	EA	16
5	6	PADZZ	5905-00-470-9481	RCR05G202JS	81349	RESISTOR, FIXED, COMP	EA	16
5	7	PADZZ	5905-01-035-5065	RCR05G103JS	81349	RESISTOR, FIXED, COMP	EA	4
5	8	PADZZ		JM38510-05001BCX	81349	IC	EA	4
5	9	PADZZ		CMR04E820JODP	81349	CAPACITOR	EA	1
5	10	PADZZ		JM38510-05503BEX	81349	MICROCIRCUIT DGTL	EA	1
5	11	PADZZ	5910-00-113-5465	M39014-02-1240	81349	CAPACITOR, FIXED, CER	EA	2
5	12	PADZZ		JM38510-05202BCX	81349	IC	EA	1
5	13	PADZZ	5940-00-913-8093	M55155-29-5	81349	TERMINAL, STUD	EA	5
5	14	PAHZZ	5910-00-513-5385	M39014-02-1218	81349	CAPACITOR, FIXED, CER	EA	1
5	15	PADZZ		SM-C-889034	80063	IC	EA	3
5	16	PADZZ		SM-C-889035	80063	IC	EA	3
5	17	PADZZ	5910-00-600-6889	M39014-02-1230	81349	CAPACITOR FIXED CER	EA	4
5	18	PAHZZ	5910-01-027-1258	M39014/01-1473	81349	CAPACITOR, FIXED, CER	EA	1
5	19	PADZZ		JM38510-05603BEX	81349	IC	EA	2
5	20	XDDZZ		SMC889069	80063	STIFFNER	EA	1
5	21	XDDZZ	5320-00-821-4996	MS16535-23	96906	RIVET, TUBULAR	EA	5
5	22	XDDZZ	5305-00-054-5652	MS51957-18	96906	SCREW, MACHINE	EA	2
5	23	XDDZZ	5310-00-595-6211	MS15795-803	96906	WASHER, FLAT	EA	4
5	24	XDDZZ	5310-00-933-8118	MS35338-135	96906	WASHER, LOCK	EA	2
5	25	XDDZZ	5310-00-934-9748	MS35649-244	96906	NUT, PLAIN, HEXAGON	EA	2
5	26	PADZZ	5935-00-520-5228	M21097-5-09	81349	CONNECTOR, RECEPTACL	EA	1
5	27	PADZZ	5961-00-237-2384	JAN1N5614	81349	SEMICONDUCTOR DEVIC	EA	3
5	28	PADZZ	5910-01-033-5234	M39014-02-1236	81349	CAPACITOR, FIXED, CER	EA	1
5	29	XDDZZ		SMD889042	80063	PCB, TIMING CKT	EA	1
5	30	XDDZZ		SMC889134	80063	STIFFNER	EA	2
5	31	XDDZZ	5320-00-953-7441	MS16535-26	96906	RIVET, TUBULAR	EA	4

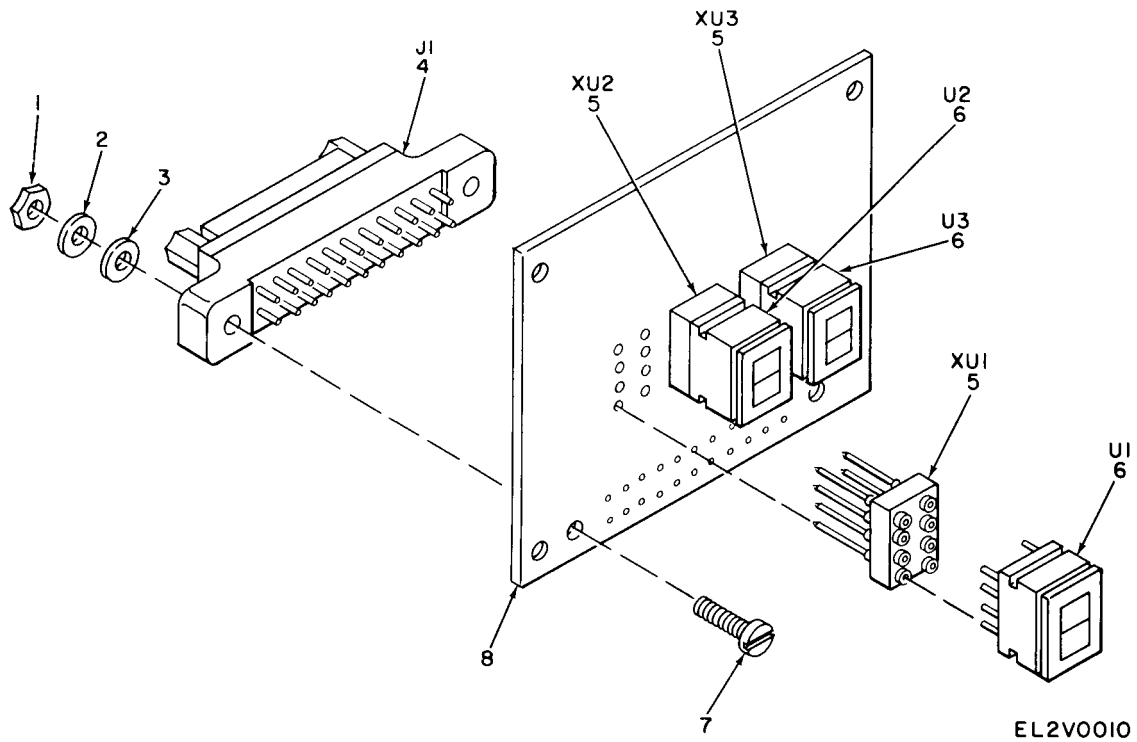
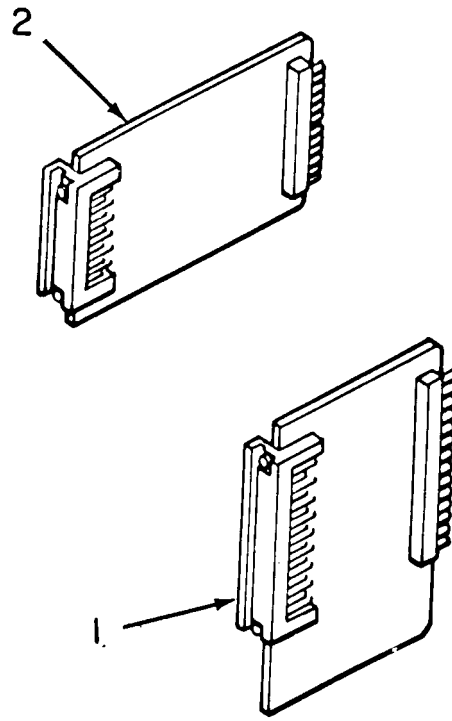


Figure 6. Display Circuit PC Board (A13).

SECTION II		TM11-6130-392-34P					
(1)	(2)	(3)	(4)	(5)	(6)	(7)	(8)
ILLUSTRATION							
(A)	(B)	NATIONAL			DESCRIPTION		QTY
FIG	ITEM	STOCK	PART	FSCM		USABLE ON CODE	INC
NO	NO	NUMBER	NUMBER				IN
							UNIT
					GROUP 0104 DISPLAY CIRCUIT PC BOARD A13		
6	1	XDHZZ	5310-00-934-9748	MS35649-244	96906	NUT, PLAIN, HEXAGON	EA 2
6	2	XDHZZ	5310-00-928-2690	MS35338-134	96906	WASHER, LOCK	EA 2
6	3	XDHZZ	5310-00-595-6761	MS15795-802	96906	WASHER, FLAT	EA 2
6	4	PAHZZ		SM-C-889072	80063	CONNECTOR	EA 1
6	5	PAHZZ		SM-C-889090	80063	SOCKET	EA 3
6	6	PAFZZ		SM-C-889091	80063	DISPLAY, INCAND	EA 3
6	7	XDHZZ	5305-00-054-5639	MS51957-5	96906	SCREW, MACHINE	EA 2
6	8	XDHZZ		SMD889048	80063	PCB, DISPLAY CKT	EA 1



EL2V0011

Figure 7. Special Tools.

SECTION III					TM11-6130-392-34P			
(1)	(2)	(3)	(4)	(5)	(6)	(7)	(8)	
ILLUSTRATION					DESCRIPTION		QTY	
(A)	(B)	NATIONAL					INC	
FIG	ITEM	STOCK	PART	FSCM		USABLE ON CODE	IN	
NO	NO	NUMBER	NUMBER				UNIT	
NO	NO	SMR						
		CODE						
					GROUP 99 SPECIAL TOOLS			
7	1	PEFZZ	6130-01-066-4495	SMD889122	80063	EXTENDER CARD,ELECT	EA 1	
7	2	PEFZZ	6130-01-066-4496	SMD889125	80063	EXTENDER CARD,ELECT	EA 1	
						BOI: 1 AUTH FOR 1-50 EQUIP		

NOTE: LATEST PART NUMBER ASSIGNMENT IS INCLUDED AT END OF INDEX.

STOCK NUMBER	FIGURE NO	ITEM NO	STOCK NUMBER	FIGURE NO	ITEM NO
5310-00-003-9264	2	95	5905-00-458-9346	4	18
5961-00-014-6458	3	35	5905-00-458-9346	5	1
5940-00-044-1583	2	190	5905-00-458-9500	3	32
5940-00-051-6257	2	125	5305-00-459-1160	2	109
5305-00-054-5637	2	127	5305-00-460-0673	2	5
5305-00-054-5639	2	48	5905-00-470-9481	5	6
5305-00-054-5639	6	7	5355-00-482-4498	2	133B
5305-00-054-5644	2	21	5360-00-498-2815	2	163
5305-00-054-5646	2	56A	5905-00-499-1983	5	2
5305-00-054-5647	2	35	5910-00-513-5385	3	25
5305-00-054-5648	2	38	5910-00-513-5385	4	24
5305-00-054-5648	2	73	5910-00-513-5385	5	14
5305-00-054-5649	2	115	5935-00-520-5228	5	26
			5310-00-543-2739	2	197
5305-00-054-5650	2	36	5310-00-550-3715	2	60
5305-00-054-5651	3	13	5310-00-582-5677	2	192
5305-00-054-5651	4	4	5320-00-584-0672	2	202
5305-00-054-5652	2	77	5310-00-595-6211	2	26
5305-00-054-5652	3	31	5310-00-595-6211	3	15
5305-00-054-5652	4	19	5310-00-595-6211	4	3
5305-00-054-5652	5	22	5310-00-595-6211	5	23
5305-00-054-5655	2	27	5310-00-595-6761	2	47
5305-00-054-6650	2	94	5310-00-595-6761	6	3
5305-00-054-6651	2	46	5910-00-600-6889	5	17
5305-00-054-6652	2	169	5905-00-617-5091	3	37
5305-00-054-6654	2	68	5340-00-631-7894	2	25
5305-00-054-6655	2	58	5340-00-631-7894	2	72
5305-00-056-9961	2	67	5340-00-631-7894	2	75
5305-00-057-3800	2	177	5340-00-631-7894	2	101
5310-00-058-3599	2	20	5940-00-687-0294	2	51
5935-00-089-7918	2	88	5310-00-722-5998	2	45
5905-00-090-7078	2	176	5975-00-727-5153	2	70
5930-00-090-7080	2	133A	6240-00-763-7744	2	140
5961-00-104-8378	3	30	5310-00-771-7359	2	205
5905-00-105-7768	2	174	5310-00-771-7361	2	203
5905-00-106-1356	3	21	5920-00-785-5471	2	96
5905-00-106-3666	2	173	5940-00-813-0698	2	19
5905-00-106-3666	3	8	5310-00-813-6950	2	50
5905-00-106-3666	4	5	6210-00-813-8265	2	139
5905-00-106-9346	3	17	5305-00-814-1707	2	40
5935-00-109-0137	2	87	5340-00-815-4930	2	2
5935-00-109-0147	3	20	5961-00-815-6895	3	4
5935-00-109-0147	4	20	5310-00-820-1559	2	974
5905-00-110-7620	4	13	5320-00-821-4996	2	34
5910-00-113-5465	5	11	5320-00-821-4996	3	1
5305-00-114-9734	2	104	5320-00-821-4996	4	16
5320-00-117-6930	2	121	5320-00-821-4996	5	21
5320-00-117-6930	2	204	5310-00-837-1381	2	198
5961-00-135-4182	4	21	5340-00-842-5920	2	31
5310-00-137-3068	2	99	5940-00-842-6483	2	191
5310-00-138-9806	2	135	5310-00-845-2359	2	18
5310-00-139-7088	2	194	5310-00-845-5030	2	15
5905-00-141-1168	3	22	5930-00-852-2407	2	91
5940-00-143-4771	2	6	5310-00-878-9518	2	52
5940-00-155-7686	2	568	5310-00-880-5978	2	14
5905-00-161-6706	2	175B	5310-00-881-9981	2	122
5940-00-177-7974	4	27	5305-00-901-5077	2	65
5310-00-178-8631	2	186	5920-00-901-9938	2	97
5310-00-180-0277	2	134	5940-00-913-8093	3	7
5905-00-180-8303	3	33	5940-00-913-8093	4	8
5305-00-225-6400	2	116	5940-00-913-8093	5	13
5305-00-225-7773	2	8	5310-00-914-6543	2	178
5905-00-232-2993	4	14	5935-00-926-7522	2	78
5961-00-237-2384	5	27	5310-00-928-2690	2	128
5905-00-244-6934	3	26	5310-00-928-2690	6	2
6210-00-248-5478	2	141	5310-00-929-6395	2	93
5310-00-285-5631	2	110		2	114
5340-00-290-4480	2	154	5310-00-933-8118	3	14
5905-00-325-9264	2	49	5310-00-933-8118	4	2
5961-00-361-9482	3	23	5310-00-933-8118	5	24
5930-00-400-1820	2	184	5310-00-933-8121	2	193
5910-00-400-8642	3	3	5310-00-934-9748	3	16
5905-00-401-7425	3	5	5310-00-934-9748	4	1
5910-00-402-1700	3	38	5310-00-934-9748	5	25
5310-00-406-0699	2	206	5310-00-934-9748	6	1
5905-00-407-0084	5	3	5310-00-939-0676	2	179
5930-00-412-3721	2	189	5961-00-951-8757	4	9
5961-00-421-3002	2	123	5320-00-953-7441	5	31
5961-00-421-3002	3	10	5305-00-958-2918	2	59
5961-00-421-3002	4	25	5310-00-974-6623	2	55

STOCK NUMBER	FIGURE NO	ITEM NO	STOCK NUMBER	FIGURE NO	ITEM NO
5310-00-984-7042	2	187	5940-01-072-0402	2	148
5305-00-988-7606	2	195	5940-01-072-0411	2	162
6685-00-989-5312	1	2	6130-01-072-0412	2	149
5340-00-989-9224	2	170	6130-01-072-0413	2	42
5305-00-993-9189	2	61	6130-01-072-0414	2	39
5310-00-999-4033	2	98	6130-01-072-0424	2	41
5305-01-015-0994	2	13	7690-01-072-0425	2	22
5305-01-020-0178	2	16	7690-01-072-0426	2	7
5910-01-027-1258	5	18	7690-01-072-0427	2	22A
5910-01-033-5234	5	28	6130-01-072-0484	2	43
5905-01-035-5065	5	7	5910-01-072-0501	2	1
5305-01-047-6239	2	143	5970-01-074-0046	2	145
6130-01-066-4495	7	1	6625-01-075-9209	2	57
6130-01-066-4496	7	2	5930-01-075-9262	2	132
6130-01-072-0401	2	142			

PART NUMBER	FSCM	FIG NO	ITEM NO	PART NUMBER	FSCM	FIG NO	ITEM NO
AN960C2	88044	2	110	MS24693C26	96906	2	59
CMR04E270JPAM	81349	3	34	MS24693C3	96906	2	116
CMR04E820JODP	81349	5	9	MS24693C4	96906	2	67
FHN42W	81349	2	96	MS25036-101	96906	2	19
FM01-125V1A	81349	2	97	MS25036-103	96906	2	6
JANSPB25	81349	2	105	MS25081C4	96906	2	98
JAN1N4126	81349	3	23	MS25082-C20	96906	2	135
JAN1N4960	81349	4	21	MS25082C13	96906	2	194
JAN1N5550	81349	2	123	MS25082C21	96906	2	99
JAN1N5550	81349	3	10	MS25082C5	96906	2	54
JAN1N5550	81349	4	25	MS25082C6	96906	2	95
JAN1N5614	81349	5	27	MS25237-387	96906	2	140
JAN1N747A	81349	3	4	MS25281R6	96906	2	170
JAN2N2222A	81349	4	9	MS3214-5	96906	2	206
JAN2N2920	81349	3	30	MS3367-4-9	96906	2	70
JAN2N3498	81349	3	35	MS35333-70	96906	2	60
JM38510-05001BCX	81349	5	8	MS35333-72	96906	2	197
JM38510-05202BCX	81349	5	12	MS35333-75	96906	2	186
JM38510-05503BEX	81349	5	10	MS35333-76	96906	2	134
JM38510-05603BEX	81349	5	19	MS35335-57	96906	2	20
LC27GT2	81349	2	141	MS35338-134	96906	2	128
LH73-1	81349	2	139	MS35338-134	96906	2	2
MS122116	96906	2	31	MS35338-135	96906	2	114
MS124735	96906	2	154	MS35338-135	96906	3	14
MS15795-802	96906	2	47	MS35338-135	96906	4	2
MS15795-802	96906	6	3	MS35338-135	96906	5	24
MS15795-803	96906	2	26	MS35338-136	96906	2	93
MS15795-803	96906	3	15	MS35338-139	96906	2	193
MS15795-803	96906	4	3	MS35338-140	96906	2	55
MS15795-803	96906	5	23	MS35338-141	96906	2	187
MS15795-805	96906	2	45	MS35649-244	96906	3	16
MS15795-807	96906	2	14	MS35649-244	96906	4	1
MS15795-810	96906	2	192	MS35649-244	96906	5	25
MS16535-23	96906	2	34	MS35649-244	96906	6	1
MS16535-23	96906	3	1	MS51957-11	96906	2	21
MS16535-23	96906	4	16	MS51957-12	96906	2	56A
MS16535-23	96906	5	21	MS51957-13	96906	2	35
MS16535-24	96906	2	30	MS51957-14	96906	2	38
MS16535-26	96906	5	31	MS51957-14	96906	2	73
MS16535-84	96906	2	200	MS51957-15	96906	2	115
MS16995-30	96906	2	195				
MS16996-22	96906	2	8	MS51957-16	96906	2	36
MS18013-1	96906	1	2	MS51957-17	96906	3	13
MS20257C1-250	96906	2	97C	MS51957-17	96906	4	4
MS20426AD2-5	96906	2	121	MS51957-18	96906	2	77
MS20426AD2-5	96906	2	204	MS51957-18	96906	3	31
MS20426AD3-6	96906	2	202	MS51957-18	96906	4	19
MS20470AD2-3	96906	2	83	MS51957-18	96906	5	22
MS20605AD3W4	96906	2	199	MS51957-21	96906	2	27
MS21027A211	96906	2	189	MS51957-26	96906	2	94
MS21209C0415	96906	2	25	MS51957-27	96906	2	46
MS21209C0415	96906	2	72	MS51957-28	96906	2	169
MS21209C0415	96906	2	75	MS51957-3	96906	2	127
MS21209C0415	96906	2	101	MS51957-30	96906	2	68
MS21209C0615	96906	2	2	MS51957-31	96906	2	58
MS24585C261	96906	2	163	MS51957-5	96906	2	48
MS24659-23D	96906	2	91	MS51957-5	96906	6	7
MS24693-2	96906	2	143	MS77066-1	96906	2	56B
MS24693-3	96906	2	158	MS77070-1	96906	4	27
MS24693C2	96906	2	61	MS91528-1F3B	96906	2	133B

PART NUMBER	FSCM	FIG NO	ITEM NO	PART NUMBER	FSCM	FIG NO	ITEM NO
MS91528-123B	96906	2	36	RNC55H4752BM	81349	2	175
M21097-11-03	81349	2	88	RNC55H9311BM	81349	2	182
M21097-4-09	81349	2	87	RNC55H9311BM	81349	3	28
M21097-5-03	81349	3	20	RNC55K2263FM	81349	2	175A
M21097-5-03	81349	4	20	RNC60H7501FM	81349	5	2
M21097-5-09	81349	5	26	RNC60K59ROFM	81349	3	9
M24066-3-004	81349	2	208	RNC65H28ROBM	81349	3	19
M3767-13	81349	2	64	RNC70H1050BM	81349	3	19
M3786-13-0022	81349	2	133A	RNR65K3010FM	81349	4	12
M3786-13-0039	81349	2	133	RVC6TAYSD103A	81349	2	188
M38527-1-2B1	81349	3	36	RWR895051FM	81349	3	5
M39003-01-2468	81349	3	38	SE079B01	81349	2	125
M39003-04-0224	81349	3	6	SM-B-889022	80063	2	149
M39006-01-3054	81349	3	3	SM-C-739546	80063	4	10
M39014-02-1218	81349	3	25	SM-C-739876	80063	3	29
M39014-02-1218	81349	4	24	SM-C-852390	80063	4	7
M39014-02-1218	81349	5	14	SM-C-889025	80063	2	145
M39014-02-1230	81349	5	17	SM-C-889027	80063	2	162
M39014-02-1236	81349	5	28	SM-C-889029	80063	2	148
M39014-02-1240	81349	5	11	SM-C-889031	80063	2	152
M39014-10-1473	81349	4	17	SM-C-88032	80063	2	41
M39014/01-1473	81349	5	18	SM-C-889034	80063	5	15
M39015-1-003YM	81349	4	14	SM-C-889035	80063	5	16
M39015-2-006XM	81349	5	4	SM-C-889057	80063	2	155
M39015/2-006WM	81349	2	176	SM-C-889062	80063	2	57
M39016-29-015L	81349	4	22	SM-C-889063	80063	2	183
M39018-01-0730	81349	4	11	SM-C-889064	80063	2	53
M39018-04-1203	81349	2	4	SM-C-889065	80063	2	132
M55155-29-5	81349	3	7	SM-C-889072	80063	6	4
M55155-29-5	81349	4	8	SM-C-889077	80063	2	129
M55155-29-5	81349	5	13	SM-C-889083	80063	3	12
M8805-23-003	81349	2	184	SM-C-889090	80063	6	5
M8805-72-005	81349	2	185	SM-C-889091	80063	6	6
NAS1068C04M	80205	2	122	SM-C-889094	80063	2	1
NAS1068C08M	80205	2	97A	SM-C-889096	80063	2	37
NAS1068C4M	80205	2	205	SM-C-889100	80063	2	51
NAS1291C02M	80205	2	50	SM-C-889102	80063	2	32
NAS1291C04M	80205	2	18	SM-C-889103	80063	2	63
NAS1291C06M	80205	2	52	SM-C-889113-1	80063	2	22
NAS1291C08M	80205	2	15	SM-C-889113-2	80063	2	7*
NAS1635-00-6	80205	2	177	SM-C-889118	80063	2	150
NAS1635-02-5	80205	2	109	SM-C-889120	80063	4	23
NAS1635-08-12	80205	2	104	SM-C-889128	80063	2	167
NAS1635-08-6	80205	2	13	SM-C-955578	80063	2	22A
NAS1635-08-7	80205	2	16	SM-D-889019	80063	2	142
NAS1635-08-8	80205	2	65	SM-D-889037	80063	2	42
NAS1635-3-7	80205	2	5	SM-D-889040	80063	2	39
NAS1676C0	80205	2	178	SM-D-889043	80063	2	43
NAS662C2R10	80205	2	138	SMB889021	80063	2	144
NAS662C2R4	80205	2	40	SMB89023	80063	2	147
NAS671C0	80205	2	179	SMB889109	80063	2	159
NAS671C8	80205	2	198	SMB889132	80063	2	151
PB01FA01	81349	2	191	SMB937815	80063	2	207
PB01FA02	81349	2	190	SMC882448	80063	2	79
RCR05G102JS	81349	3	32	SMC889024	80063	2	160
RCR05G103JS	81349	5	7	SMC889024-1	80063	2	161
RCR05G104JS	81349	4	18	SMC889025-1	80063	2	146
RCR05G104JS	81349	5	1	SMC889026	80063	2	164
RCR05G152JS	81349	3	33	SMC889026-1	80063	2	165
RCR05G202JS	81349	5	6	SMC88928	80063	2	166
RCR05G271JS	81349	5	5	SMC889031-1	80063	2	153
RCR05G273JS	81349	5	3	SMC889036	80063	2	10
RCR05G472JS	81349	3	37	SMC889052	80063	2	82
RCR07G102JS	81349	4	13	SMC889053-1	80063	2	85
RCR07G103JS	81349	2	173	SMC889054-1	80063	2	89A
RCR07G103JS	81349	3	8	SMC889055	80063	2	89
RCR07G103JS	81349	4	5	SMC889056	80063	2	80
RCR07G152JS	81349	3	21	SMC889061	80063	3	24
RCR07G561JS	81349	2	174	SMC889066	80063	3	2
RCR07G824JS	81349	3	26	SMC889067	80063	2	120
RCR20G222JS	81349	3	22	SMC889069	80063	4	15
RCR32G103JS	81349	3	17	SMC889069	80063	5	20
RER40F4R02M	81349	2	108	SMC889071-1	80063	2	118
RER40F44R2M	81349	2	107	SMC889071-2	80063	2	117
RER45F10R2M	81349	2	106	SMC889073-1	80063	2	74
RER65F1001M	81349	2	49	SMC889074	80063	2	3
RJ26FW503	81349	2	175B	SMC889075	80063	2	66
RNC55H1651BM	81349	3	27	SMC889078-1	80063	2	130
RNC55H1692BM	81349	2	180	SMC889078-2	80063	2	112
RNC55H1872BM	81349	2	181	SMC889078-3	80063	2	171



PART NUMBER	FSCM	FIG NO	ITEM NO	PART NUMBER	FSCM	FIG NO	ITEM NO
SMC889079	80063	2	28	SMC937844	80063	2	9
SMC889079-1	80063	2	29	SMC937844	8063	2	94A/
SMC889080	80063	2	126	SMC955569	80063	2	172
SMC889081	80063	2	56	SMC955581	80063	2	33
SMC889084	80063	2	100	SMC955582	80063	2	37
SMC889084-1	80063	2	102	SMC955585	80063	2	97D
SMC889085	80063	2	102A	SMD889020	80063	2	156
SMC889085-1	80063	2	113	SMD889020-1	80063	2	157
SMC889086	80063	3	11	SMD889039	80063	3	39
SMC889088	80063	4	6	SMD889042	80063	5	29
SMC889089	80063	2	196	SMD889045	80063	4	26
SMC889099	80063	2	119	SMD889046	80063	2	131
SMC889101	80063	2	103	SMD889048	80063	6	8
SMC889106	80063	2	62	SMD889049	80063	2	71
SMC889108	80063	1	7	SMD889051	80063	2	81
SMC889110	80063	1	44	SMD889051-1	80063	2	84
SMC889117	80063	2	124	SMD889076	80063	2	111
SMC889119	80063	2	17	SMD889092	80063	1	5
SMC889121	80063	2	23	SMD889122	80063	7	1
SMC889121-1	80063	2	24	SMD889125	80063	7	2
SMC889130	80063	2	168	SMD955580-1	80063	2	97B
SMC889133	80063	2	12	SMD955580-2	80063	2	92
SMC889134	80063	5	30	SME889030	80063	1	4
SMC889135	80063	2	72A	SME889050	80063	2	90
SMC889135-1	80063	2	76	SME889059	80063	2	11
SMC937814	80063	2	143A	SME889060	80063	2	201
SMC937816	80063	2	86	SME889060-9	80063	2	203
SMC937817	80063	2	15A	SME889093	80063	1	6
SMC937818	80063	1	1	TA335-50-50-R	15505	1	3
SMC937842	80063	2	42B	UG274CU	80058	2	78
SMC937843	80063	2	42A				

## LATEST PART NUMBER ASSIGNMENT

PART NUMBER	FSCM	FIG. NO.	ITEM NO.
M24066-3-004	81349	2	69

DISTRIBUTION:

*Active Army:*

HISA (Ft Monmouth)(21)  
USAINSCOM (2)  
COE (1)  
TSG (1)

USAARENBD (1)

DARCOM (1)  
TRADOC (2)  
OS Maj Cmd(4)  
TECOM (2)  
USACC (4)  
Armies (2)  
Corps (2)  
Svc Colleges (1)  
USASIGS (5)  
USAADS (2)  
USAFAS (2)  
USAARMS (2)  
USAIS (2)  
USAES (2)  
MDW (1)

USAICS (3)  
MAAG (1)

USARMIS (1)

USAERDAA (1)  
USAERDAW (1)  
Ft. Gordon (10)  
Ft. Carson (5)  
Army Dep (1) except  
LBAD (14)

SAAD (10)

TOAD (14)  
SHAD (3)  
Ft Gillem (10)  
USA Dep (1)  
Sig Sec USA Dep (1)  
Ft Richardson (CERCOM Ofc) (2)  
Units org under fol TOE:  
29-207 (2)  
29-610 (2)

NG; None  
USAR: None

*For explanation of abbreviations used see, AR 310-50.*

RECOMMENDED CHANGES TO EQUIPMENT TECHNICAL MANUALS



THEN... JOT DOWN THE DOPE ABOUT IT ON THIS FORM, TEAR IT OUT, FOLD IT AND DROP IT IN THE MAIL!

# SOMETHING WRONG WITH THIS MANUAL?

FROM: (YOUR UNIT'S COMPLETE ADDRESS)

Commander  
Stateside Army Depot  
ATTN: AMSTA-US  
Stateside, N.J. 07703

DATE 4 April 1978

PUBLICATION NUMBER

TM 11-5840-340-14&P

DATE

23 Jan 74

TITLE

Radar Set W/PLC-76

BE EXACT... PIN-POINT WHERE IT IS

IN THIS SPACE TELL WHAT IS WRONG AND WHAT SHOULD BE DONE ABOUT IT:

PAGE NO.	PARA-GRAPH	FIGURE NO.	TABLE NO.
----------	------------	------------	-----------

2-25	2-28		
------	------	--	--

Recommend that the installation antenna alignment procedure be changed throughout to specify a 2° IFF antenna lag rather than 1°.

REASON: Experience has shown that with only a 1° lag, the antenna servo system is too sensitive to wind gusting in excess of 25 knots, and has a tendency to rapidly accelerate and decelerate as it hunts, causing strain to the drive train. Hunting is minimized by adjusting the lag to 2° without degradation of operation.

3-10	3-3		
------	-----	--	--

		3-1	Item 5, Function column. Change "2 db" to "3db."
--	--	-----	--

REASON: The adjustment procedure for the TRANS POWER FAULT indicator calls for a 3 db (500 watts) adjustment to light the TRANS POWER FAULT indicator.

5-6	5-8		
-----	-----	--	--

Add new step f.1 to read, "Replace cover plate removed in step e.1, above."

REASON: To replace the cover plate.

E-5			
-----	--	--	--

			For item 2, change the NSN to read: 5835-00-134-9186.
--	--	--	---

REASON: Accuracy.

E-8		E-3	
-----	--	-----	--

Identify the cover on the junction box (item no. 5).

REASON: It is a separate item and is not called out on figure 19.

E-9			
-----	--	--	--

Add the cover of the junction box as an item in the listing for figure 19.

REASON: Same as above.

TYPED NAME, GRADE OR TITLE, AND TELEPHONE NUMBER

SSG I. M. DeSpirito 999-1776

SIGN HERE:

*SSA I. M. DeSpirito*

DA FORM 2028-2  
1 AUG 74

P.S.--IF YOUR OUTFIT WANTS TO KNOW ABOUT YOUR MANUAL "FIND" MAKE A CARBON COPY OF THIS AND GIVE IT TO YOUR HEADQUARTERS.

TEAR ALONG DOTTED LINE



# SOMETHING WRONG WITH THIS MANUAL?

THEN... JOT DOWN THE DOPE ABOUT IT ON THIS FORM, TEAR IT OUT, FOLD IT AND DROP IT IN THE MAIL!

FROM: (YOUR UNIT'S COMPLETE ADDRESS)

DATE

PUBLICATION NUMBER

TM 11-6130-392-34P

DATE

8 Nov 79

TITLE

BATTERY CHARGER PP-7286/U

BE EXACT... PIN-POINT WHERE IT IS

IN THIS SPACE TELL WHAT IS WRONG AND WHAT SHOULD BE DONE ABOUT IT:

PAGE NO.

PARA-GRAPH

FIGURE NO.

TABLE NO.

TEAR ALONG DOTTED LINE

TYPED NAME, GRADE OR TITLE, AND TELEPHONE NUMBER

SIGN HERE:

FILL IN YOUR  
UNIT'S ADDRESS

FOLD BACK

DEPARTMENT OF THE ARMY

OFFICIAL BUSINESS

PENALTY FOR PRIVATE USE, \$300

POSTAGE AND FEES PAID  
DEPARTMENT OF THE ARMY  
DOD-314



Commander  
US Army Communications and  
Electronics Materiel Readiness Command  
ATTN: DRSEL-ME-MQ  
Fort Monmouth, New Jersey 07703

TEAR ALONG DOTTED LINE

FOLD BACK

